

Amended

Form **990**

# Return of Organization Exempt From Income Tax

OMB No 1545-0047

Under section 501(c), 527, or 4947(a)(1) of the Internal Revenue Code (except black lung benefit trust or private foundation)

# 2011

**Open to Public Inspection**

Department of the Treasury  
Internal Revenue Service

▶ The organization may have to use a copy of this return to satisfy state reporting requirements

**A For the 2011 calendar year, or tax year beginning** OCTOBER 1, 2011, **and ending** SEPTEMBER 30, 2012

**B** Check if applicable:  
 Address change  
 Name change  
 Initial return  
 Terminated  
 Amended return  
 Application pending

**C Name of organization** UNITED CEREBRAL PALSY OF CENTRAL MINNESOTA  
 Doing Business As  
 Number and street (or P O box if mail is not delivered to street address) Room/suite  
 510 25TH AVE N  
 City or town, state or country, and ZIP + 4  
 ST CLOUD MN 56303-3222

**D Employer identification number** 41-0807591  
**E Telephone number** 320-253-0765  
**G Gross receipts \$** 178,283

**F Name and address of principal officer** SHELLEY GAETZ  
 510 25TH AVE N ST CLOUD MN 56303-3222

**H(a)** Is this a group return for affiliates?  Yes  No  
**H(b)** Are all affiliates included?  Yes  No  
 If "No," attach a list (see instructions)

**I Tax-exempt status**  501(c)(3)  501(c)( ) (insert no)  4947(a)(1) or  527

**J Website:** ▶ www.ucpcentralmn.org

**K Form of organization**  Corporation  Trust  Association  Other ▶

**L Year of formation** 1954 **M State of legal domicile** MN

**H(c) Group exemption number** ▶ N/A

## Part I Summary

Activities & Governance	1	Briefly describe the organization's mission or most significant activities: ADVANCE THE INDEPENDENCE, PRODUCTIVITY AND RESPECT OF PERSONS WITH CEREBRAL PALSY AND OTHER DISABILITIES, PROVIDE INFORMATION AND REFERRAL SERVICES TO THESE PERSONS, THEIR FAMILIES AND PROFESSIONALS, AND IN GENERAL RAISE PUBLIC AWARENESS WITH REGARD TO CEREBRAL PALSY			
	2	Check this box <input type="checkbox"/> if the organization discontinued its operations or disposed of more than 25% of its net assets.			
	3	Number of voting members of the governing body (Part VI, line 1a)	3	16	
	4	Number of independent voting members of the governing body (Part VI, line 1b)	4	16	
	5	Total number of individuals employed in calendar year 2011 (Part V, line 2a)	5	5	
	6	Total number of volunteers (estimate if necessary)	6	150	
	7a	Total unrelated business revenue from Part VIII, column (C), line 12	7a	0	
	7b	Net unrelated business taxable income from Form 990-T, line 34	7b	0	
	Revenue	8	Contributions and grants (Part VIII, line 1h)	103,067	106,693
		9	Program service revenue (Part VIII, line 2g)	11,428	8,869
10		Investment income (Part VIII, column (A), lines 3, 4, and 7d)	1,596	53	
11		Other revenue (Part VIII, column (A), lines 5, 6d, 8c, 9c, 10c, and 11e)	57,032	47,892	
12		Total revenue—add lines 8 through 11 (must equal Part VIII, column (A), line 12)	171,963	163,507	
Expenses		13	Grants and similar amounts paid (Part IX, column (A), lines 1-3)	0	0
		14	Benefits paid to or for members (Part IX, column (A), line 4)	0	0
		15	Salaries, other compensation, employee benefits (Part IX, column (A), lines 5-10)	112,440	98,014
		16a	Professional fundraising fees (Part IX, column (A), line 11e)	0	0
		b	Total fundraising expenses (Part IX, column (D), line 25) ▶ 8,100		
	17	Other expenses (Part IX, column (A), lines 11a-11d, 11f-24e)	64,847	67,930	
	18	Total expenses Add lines 13-17 (must equal Part IX, column (A), line 25)	177,287	165,944	
19	Revenue less expenses. Subtract line 18 from line 12	(5,424)	(2,437)		
Net Assets or Fund Balances	20	Total assets (Part X, line 16)	Beginning of Current Year 56,863	End of Year 27,621	
	21	Total liabilities (Part X, line 26)	42,109	24,083	
	22	Net assets or fund balances. Subtract line 21 from line 20	14,754	3,538	

## Part II Signature Block

Under penalties of perjury, I declare that I have examined this return, including accompanying schedules and statements, and to the best of my knowledge and belief, it is true, correct, and complete. Declaration of preparer (other than officer) is based on all information of which preparer has any knowledge.

**Sign Here**  
 Signature of officer: *Kristin Schmitt*  
 Date: 12/17/13  
 Type or print name and title: Kristin Schmitt, Treasurer

**Paid Preparer Use Only**  
 Print/Type preparer's name: BETHANY A KETCHUM  
 Preparer's signature: *B. Ketchum*  
 Date: 12/06/2013  
 Check  if self-employed  
 PTIN: P01370749  
 Firm's name: ▶ SCHMITZ & KETCHUM PA  
 Firm's EIN: ▶ 41-1771683  
 Firm's address: ▶ 600 25TH AVE S SUITE 102 ST CLOUD MN 56301  
 Phone no: 320-251-7444

May the IRS discuss this return with the preparer shown above? (see instructions)  Yes  No

For Paperwork Reduction Act Notice, see the separate instructions.

Form **990** (2011)

7 917

**Part III** Statement of Program Service Accomplishments

Check if Schedule O contains a response to any question in this Part III

1 Briefly describe the organization's mission:

TO ENRICH THE QUALITY OF LIFE FOR PERSONS WITH CEREBRAL PALSY AND OTHER DISABILITIES

2 Did the organization undertake any significant program services during the year which were not listed on the prior Form 990 or 990-EZ?  Yes  No

If "Yes," describe these new services on Schedule O.

3 Did the organization cease conducting, or make significant changes in how it conducts, any program services?  Yes  No

If "Yes," describe these changes on Schedule O.

4 Describe the organization's program service accomplishments for each of its three largest program services, as measured by expenses. Section 501(c)(3) and 501(c)(4) organizations and section 4947(a)(1) trusts are required to report the amount of grants and allocations to others, the total expenses, and revenue, if any, for each program service reported.

4a (Code \_\_\_\_\_) (Expenses \$ 73,160 including grants of \$ \_\_\_\_\_) (Revenue \$ \_\_\_\_\_)

ACCESS TO TECHNOLOGY-46 INDIVIDUALS WITH DISABILITIES RECEIVED A COMPUTER THROUGH COMPUTERS GO ROUND PROGRAM. THESE COMPUTERS ARE USED FOR INTERNET ACCESS, JOB SKILLS TRAINING, HOMEWORK, STUDIES, AND ENHANCED EDUCATION. 93 INDIVIDUALS BENEFITTED FROM ASSISTIVE TECHNOLOGY DEMONSTRATIONS ON A ONE-TO-ONE BASIS AND 92 INDIVIDUALS WERE ABLE TO BORROW AN ASSISTIVE TECHNOLOGY DEVICE FOR TRIAL TO DETERMINE IF THE DEVICE WAS APPROPRIATE FOR THE PERSON USING IT. BY HAVING ACCESS TO THESE DEVICES, INDIVIDUALS CAN LEARN HOW THE DEVICE FITS THEIR PARTICULAR NEEDS AND THEY CAN MAKE AN INFORMED DECISION BEFORE MAKING AN EXPENSIVE PURCHASE.

4b (Code \_\_\_\_\_) (Expenses \$ 40,646 including grants of \$ \_\_\_\_\_) (Revenue \$ \_\_\_\_\_)

INFORMATION, REFERRAL & PUBLIC EDUCATION-478 INFORMATION & REFERRAL REQUESTS WERE RESPONDED TO, PROVIDING FAMILIES WITH RESOURCE INFORMATION OVER THE TELEPHONE, INTERNET, OR EMAIL. THE UCP WEBSITE EXPERIENCED 3,034 VISITORS, TWITTER HAS 492 FOLLOWERS, AND 635 FACEBOOK FRIENDS. THE POTPOURRI CONFERENCE HAD OVER 300 ATTENDEES, AND WE PARTICIPATED IN LEGISLATIVE FORUMS ATTRACTING OVER 50 PARTICIPANTS.

4c (Code \_\_\_\_\_) (Expenses \$ 24,387 including grants of \$ \_\_\_\_\_) (Revenue \$ \_\_\_\_\_)

FINANCIAL ASSISTANCE & SCHOLARSHIPS-TEN INDIVIDUALS WITH CEREBRAL PALSY RECEIVED GRANTS TO PURCHASE SPECIALIZED EQUIPMENT. ITEMS PURCHASED INCLUDED SPECIAL EYEGLASSES, SEATING DEVICES, BICYCLES, AND AN ADJUSTABLE WHEELCHAIR DESK. THE EQUIPMENT ENABLES THE RECIPIENT TO EXPERIENCE A HIGHER LEVEL OF INDEPENDENCE IN THEIR DAILY LIVING. TEN PIECES OF USED EQUIPMENT WERE RECYCLED THROUGH THE UCP OFFICE SAVING FAMILIES APPROXIMATELY \$45,700 IN PURCHASING NEW EQUIPMENT. THESE ITEMS INCLUDED WHEELCHAIRS, BICYCLES, STANDERS, CAR SEATS, DIAPERS, AND A HOSPITAL BED.

4d Other program services (Describe in Schedule O.) NATL ORGANIZATION SETTLEMENTS

(Expenses \$ 7,500 including grants of \$ \_\_\_\_\_) (Revenue \$ \_\_\_\_\_)

4e Total program service expenses 145,693

**Part IV Checklist of Required Schedules**

	Yes	No
<b>1</b> Is the organization described in section 501(c)(3) or 4947(a)(1) (other than a private foundation)? <i>If "Yes," complete Schedule A</i>	X	
<b>2</b> Is the organization required to complete <i>Schedule B, Schedule of Contributors</i> (see instructions)?	X	
<b>3</b> Did the organization engage in direct or indirect political campaign activities on behalf of or in opposition to candidates for public office? <i>If "Yes," complete Schedule C, Part I</i>		X
<b>4</b> <b>Section 501(c)(3) organizations.</b> Did the organization engage in lobbying activities, or have a section 501(h) election in effect during the tax year? <i>If "Yes," complete Schedule C, Part II</i>		X
<b>5</b> Is the organization a section 501(c)(4), 501(c)(5), or 501(c)(6) organization that receives membership dues, assessments, or similar amounts as defined in Revenue Procedure 98-19? <i>If "Yes," complete Schedule C, Part III</i>		X
<b>6</b> Did the organization maintain any donor advised funds or any similar funds or accounts for which donors have the right to provide advice on the distribution or investment of amounts in such funds or accounts? <i>If "Yes," complete Schedule D, Part I</i>		X
<b>7</b> Did the organization receive or hold a conservation easement, including easements to preserve open space, the environment, historic land areas, or historic structures? <i>If "Yes," complete Schedule D, Part II</i>		X
<b>8</b> Did the organization maintain collections of works of art, historical treasures, or other similar assets? <i>If "Yes," complete Schedule D, Part III</i>		X
<b>9</b> Did the organization report an amount in Part X, line 21, serve as a custodian for amounts not listed in Part X; or provide credit counseling, debt management, credit repair, or debt negotiation services? <i>If "Yes," complete Schedule D, Part IV</i>		X
<b>10</b> Did the organization, directly or through a related organization, hold assets in temporarily restricted endowments, permanent endowments, or quasi-endowments? <i>If "Yes," complete Schedule D, Part V</i>		X
<b>11</b> If the organization's answer to any of the following questions is "Yes," then complete Schedule D, Parts VI, VII, VIII, IX, or X as applicable		
<b>a</b> Did the organization report an amount for land, buildings, and equipment in Part X, line 10? <i>If "Yes," complete Schedule D, Part VI</i>	X	
<b>b</b> Did the organization report an amount for investments—other securities in Part X, line 12 that is 5% or more of its total assets reported in Part X, line 16? <i>If "Yes," complete Schedule D, Part VII</i>		X
<b>c</b> Did the organization report an amount for investments—program related in Part X, line 13 that is 5% or more of its total assets reported in Part X, line 16? <i>If "Yes," complete Schedule D, Part VIII</i>		X
<b>d</b> Did the organization report an amount for other assets in Part X, line 15 that is 5% or more of its total assets reported in Part X, line 16? <i>If "Yes," complete Schedule D, Part IX</i>		X
<b>e</b> Did the organization report an amount for other liabilities in Part X, line 25? <i>If "Yes," complete Schedule D, Part X</i>		X
<b>f</b> Did the organization's separate or consolidated financial statements for the tax year include a footnote that addresses the organization's liability for uncertain tax positions under FIN 48 (ASC 740)? <i>If "Yes," complete Schedule D, Part X</i>		X
<b>12 a</b> Did the organization obtain separate, independent audited financial statements for the tax year? <i>If "Yes," complete Schedule D, Parts XI, XII, and XIII</i>	X	
<b>b</b> Was the organization included in consolidated, independent audited financial statements for the tax year? <i>If "Yes," and if the organization answered "No" to line 12a, then completing Schedule D, Parts XI, XII, and XIII is optional</i>		X
<b>13</b> Is the organization a school described in section 170(b)(1)(A)(ii)? <i>If "Yes," complete Schedule E</i>		X
<b>14 a</b> Did the organization maintain an office, employees, or agents outside of the United States?		X
<b>b</b> Did the organization have aggregate revenues or expenses of more than \$10,000 from grantmaking, fundraising, business, investment, and program service activities outside the United States, or aggregate foreign investments valued at \$100,000 or more? <i>If "Yes," complete Schedule F, Parts I and IV.</i>		X
<b>15</b> Did the organization report on Part IX, column (A), line 3, more than \$5,000 of grants or assistance to any organization or entity located outside the United States? <i>If "Yes," complete Schedule F, Parts II and IV</i>		X
<b>16</b> Did the organization report on Part IX, column (A), line 3, more than \$5,000 of aggregate grants or assistance to individuals located outside the United States? <i>If "Yes," complete Schedule F, Parts III and IV</i>		X
<b>17</b> Did the organization report a total of more than \$15,000 of expenses for professional fundraising services on Part IX, column (A), lines 6 and 11e? <i>If "Yes," complete Schedule G, Part I (see instructions)</i>		X
<b>18</b> Did the organization report more than \$15,000 total of fundraising event gross income and contributions on Part VIII, lines 1c and 8a? <i>If "Yes," complete Schedule G, Part II</i>	X	
<b>19</b> Did the organization report more than \$15,000 of gross income from gaming activities on Part VIII, line 9a? <i>If "Yes," complete Schedule G, Part III</i>		X
<b>20 a</b> Did the organization operate one or more hospital facilities? <i>If "Yes," complete Schedule H</i>		X
<b>b</b> If "Yes" to line 20a, did the organization attach a copy of its audited financial statements to this return?		N/A

**Part IV Checklist of Required Schedules (continued)**

		Yes	No
21	Did the organization report more than \$5,000 of grants and other assistance to any government or organization in the United States on Part IX, column (A), line 1? <i>If "Yes," complete Schedule I, Parts I and II</i>		X
22	Did the organization report more than \$5,000 of grants and other assistance to individuals in the United States on Part IX, column (A), line 2? <i>If "Yes," complete Schedule I, Parts I and III</i>		X
23	Did the organization answer "Yes" to Part VII, Section A, line 3, 4, or 5 about compensation of the organization's current and former officers, directors, trustees, key employees, and highest compensated employees? <i>If "Yes," complete Schedule J</i>		X
24a	Did the organization have a tax-exempt bond issue with an outstanding principal amount of more than \$100,000 as of the last day of the year, that was issued after December 31, 2002? <i>If "Yes," answer lines 24b through 24d and complete Schedule K. If "No," go to line 25</i>		X
b	Did the organization invest any proceeds of tax-exempt bonds beyond a temporary period exception?		X
c	Did the organization maintain an escrow account other than a refunding escrow at any time during the year to defease any tax-exempt bonds?		X
d	Did the organization act as an "on behalf of" issuer for bonds outstanding at any time during the year?		X
25a	<b>Section 501(c)(3) and 501(c)(4) organizations.</b> Did the organization engage in an excess benefit transaction with a disqualified person during the year? <i>If "Yes," complete Schedule L, Part I</i>		X
b	Is the organization aware that it engaged in an excess benefit transaction with a disqualified person in a prior year, and that the transaction has not been reported on any of the organization's prior Forms 990 or 990-EZ? <i>If "Yes," complete Schedule L, Part I</i>		X
26	Was a loan to or by a current or former officer, director, trustee, key employee, highly compensated employee, or disqualified person outstanding as of the end of the organization's tax year? <i>If "Yes," complete Schedule L, Part II</i>		X
27	Did the organization provide a grant or other assistance to an officer, director, trustee, key employee, substantial contributor or employee thereof, a grant selection committee member, or to a 35% controlled entity or family member of any of these persons? <i>If "Yes," complete Schedule L, Part III</i>		X
28	Was the organization a party to a business transaction with one of the following parties (see Schedule L, Part IV instructions for applicable filing thresholds, conditions, and exceptions):		
a	A current or former officer, director, trustee, or key employee? <i>If "Yes," complete Schedule L, Part IV</i>		X
b	A family member of a current or former officer, director, trustee, or key employee? <i>If "Yes," complete Schedule L, Part IV</i>		X
c	An entity of which a current or former officer, director, trustee, or key employee (or a family member thereof) was an officer, director, trustee, or direct or indirect owner? <i>If "Yes," complete Schedule L, Part IV</i>		X
29	Did the organization receive more than \$25,000 in non-cash contributions? <i>If "Yes," complete Schedule M</i>		X
30	Did the organization receive contributions of art, historical treasures, or other similar assets, or qualified conservation contributions? <i>If "Yes," complete Schedule M</i>		X
31	Did the organization liquidate, terminate, or dissolve and cease operations? <i>If "Yes," complete Schedule N, Part I</i>		X
32	Did the organization sell, exchange, dispose of, or transfer more than 25% of its net assets? <i>If "Yes," complete Schedule N, Part II</i>		X
33	Did the organization own 100% of an entity disregarded as separate from the organization under Regulations sections 301.7701-2 and 301.7701-3? <i>If "Yes," complete Schedule R, Part I</i>		X
34	Was the organization related to any tax-exempt or taxable entity? <i>If "Yes," complete Schedule R, Parts II, III, IV, and V, line 1</i>		X
35a	Did the organization have a controlled entity within the meaning of section 512(b)(13)?		X
b	Did the organization receive any payment from or engage in any transaction with a controlled entity within the meaning of section 512(b)(13)? <i>If "Yes," complete Schedule R, Part V, line 2</i>		X
36	<b>Section 501(c)(3) organizations.</b> Did the organization make any transfers to an exempt non-charitable related organization? <i>If "Yes," complete Schedule R, Part V, line 2</i>		X
37	Did the organization conduct more than 5% of its activities through an entity that is not a related organization and that is treated as a partnership for federal income tax purposes? <i>If "Yes," complete Schedule R, Part VI</i>		X
38	Did the organization complete Schedule O and provide explanations in Schedule O for Part VI, lines 11 and 19? <b>Note.</b> All Form 990 filers are required to complete Schedule O	X	

**Part V** Statements Regarding Other IRS Filings and Tax Compliance

Check if Schedule O contains a response to any question in this Part V

		Yes	No
<b>1a</b>	Enter the number reported in Box 3 of Form 1096. Enter -0- if not applicable		
<b>1b</b>	Enter the number of Forms W-2G included in line 1a. Enter -0- if not applicable		
<b>1c</b>	Did the organization comply with backup withholding rules for reportable payments to vendors and reportable gaming (gambling) winnings to prize winners?		N/A
<b>2a</b>	Enter the number of employees reported on Form W-3, Transmittal of Wage and Tax Statements, filed for the calendar year ending with or within the year covered by this return		
<b>2b</b>	If at least one is reported on line 2a, did the organization file all required federal employment tax returns? <b>Note.</b> If the sum of lines 1a and 2a is greater than 250, you may be required to e-file (see instructions)	X	
<b>3a</b>	Did the organization have unrelated business gross income of \$1,000 or more during the year?		X
<b>3b</b>	If "Yes," has it filed a Form 990-T for this year? If "No," provide an explanation in Schedule O		N/A
<b>4a</b>	At any time during the calendar year, did the organization have an interest in, or a signature or other authority over, a financial account in a foreign country (such as a bank account, securities account, or other financial account)?		X
<b>4b</b>	If "Yes," enter the name of the foreign country: <input type="checkbox"/> N/A See instructions for filing requirements for Form TD F 90-22.1, Report of Foreign Bank and Financial Accounts.		
<b>5a</b>	Was the organization a party to a prohibited tax shelter transaction at any time during the tax year?		X
<b>5b</b>	Did any taxable party notify the organization that it was or is a party to a prohibited tax shelter transaction?		X
<b>5c</b>	If "Yes" to line 5a or 5b, did the organization file Form 8886-T?		N/A
<b>6a</b>	Does the organization have annual gross receipts that are normally greater than \$100,000, and did the organization solicit any contributions that were not tax deductible?		X
<b>6b</b>	If "Yes," did the organization include with every solicitation an express statement that such contributions or gifts were not tax deductible?		N/A
<b>7</b>	<b>Organizations that may receive deductible contributions under section 170(c).</b>		
<b>7a</b>	Did the organization receive a payment in excess of \$75 made partly as a contribution and partly for goods and services provided to the payor?		X
<b>7b</b>	If "Yes," did the organization notify the donor of the value of the goods or services provided?		N/A
<b>7c</b>	Did the organization sell, exchange, or otherwise dispose of tangible personal property for which it was required to file Form 8282?		X
<b>7d</b>	If "Yes," indicate the number of Forms 8282 filed during the year		N/A
<b>7e</b>	Did the organization receive any funds, directly or indirectly, to pay premiums on a personal benefit contract?		X
<b>7f</b>	Did the organization, during the year, pay premiums, directly or indirectly, on a personal benefit contract?		X
<b>7g</b>	If the organization received a contribution of qualified intellectual property, did the organization file Form 8899 as required?		N/A
<b>7h</b>	If the organization received a contribution of cars, boats, airplanes, or other vehicles, did the organization file a Form 1098-C?		N/A
<b>8</b>	<b>Sponsoring organizations maintaining donor advised funds and section 509(a)(3) supporting organizations.</b> Did the supporting organization, or a donor advised fund maintained by a sponsoring organization, have excess business holdings at any time during the year?		N/A
<b>9</b>	<b>Sponsoring organizations maintaining donor advised funds.</b>		
<b>9a</b>	Did the organization make any taxable distributions under section 4966?		N/A
<b>9b</b>	Did the organization make a distribution to a donor, donor advisor, or related person?		N/A
<b>10</b>	<b>Section 501(c)(7) organizations.</b> Enter:		
<b>10a</b>	Initiation fees and capital contributions included on Part VIII, line 12		N/A
<b>10b</b>	Gross receipts, included on Form 990, Part VIII, line 12, for public use of club facilities		N/A
<b>11</b>	<b>Section 501(c)(12) organizations.</b> Enter:		
<b>11a</b>	Gross income from members or shareholders		N/A
<b>11b</b>	Gross income from other sources (Do not net amounts due or paid to other sources against amounts due or received from them.)		N/A
<b>12a</b>	<b>Section 4947(a)(1) non-exempt charitable trusts.</b> Is the organization filing Form 990 in lieu of Form 1041?		N/A
<b>12b</b>	If "Yes," enter the amount of tax-exempt interest received or accrued during the year		N/A
<b>13</b>	<b>Section 501(c)(29) qualified nonprofit health insurance issuers.</b>		
<b>13a</b>	Is the organization licensed to issue qualified health plans in more than one state? <b>Note.</b> See the instructions for additional information the organization must report on Schedule O.		N/A
<b>13b</b>	Enter the amount of reserves the organization is required to maintain by the states in which the organization is licensed to issue qualified health plans		N/A
<b>13c</b>	Enter the amount of reserves on hand		N/A
<b>14a</b>	Did the organization receive any payments for indoor tanning services during the tax year?		X
<b>14b</b>	If "Yes," has it filed a Form 720 to report these payments? If "No," provide an explanation in Schedule O		N/A

**Part VI Governance, Management, and Disclosure** For each "Yes" response to lines 2 through 7b below, and for a "No" response to line 8a, 8b, or 10b below, describe the circumstances, processes, or changes in Schedule O. See instructions.

Check if Schedule O contains a response to any question in this Part VI

**Section A. Governing Body and Management**

		Yes	No
<b>1a</b>	Enter the number of voting members of the governing body at the end of the tax year . . . . . <b>1a</b> 16 If there are material differences in voting rights among members of the governing body, or if the governing body delegated broad authority to an executive committee or similar committee, explain in Schedule O.		
<b>b</b>	Enter the number of voting members included in line 1a, above, who are independent . . . . . <b>1b</b> 16		
<b>2</b>	Did any officer, director, trustee, or key employee have a family relationship or a business relationship with any other officer, director, trustee, or key employee? . . . . .		X
<b>3</b>	Did the organization delegate control over management duties customarily performed by or under the direct supervision of officers, directors, or trustees, or key employees to a management company or other person? . . . . .		X
<b>4</b>	Did the organization make any significant changes to its governing documents since the prior Form 990 was filed? . . . . .		X
<b>5</b>	Did the organization become aware during the year of a significant diversion of the organization's assets? . . . . .		X
<b>6</b>	Did the organization have members or stockholders? . . . . .		X
<b>7a</b>	Did the organization have members, stockholders, or other persons who had the power to elect or appoint one or more members of the governing body? . . . . .		X
<b>b</b>	Are any governance decisions of the organization reserved to (or subject to approval by) members, stockholders, or persons other than the governing body? . . . . .		X
<b>8</b>	Did the organization contemporaneously document the meetings held or written actions undertaken during the year by the following:		
<b>a</b>	The governing body? . . . . .	X	
<b>b</b>	Each committee with authority to act on behalf of the governing body? . . . . .	X	
<b>9</b>	Is there any officer, director, trustee, or key employee listed in Part VII, Section A, who cannot be reached at the organization's mailing address? If "Yes," provide the names and addresses in Schedule O . . . . .		X

**Section B. Policies** (This Section B requests information about policies not required by the Internal Revenue Code.)

	Yes	No
<b>10a</b>		X
<b>b</b>		
<b>10b</b>		N/A
<b>11a</b>	X	
<b>b</b>		
<b>12a</b>	X	
<b>b</b>	X	
<b>c</b>	X	
<b>13</b>	X	
<b>14</b>	X	
<b>15</b>		
<b>a</b>	X	
<b>b</b>		N/A
<b>16a</b>		X
<b>b</b>		N/A

**Section C. Disclosure**

- 17** List the states with which a copy of this Form 990 is required to be filed ► MINNESOTA
- 18** Section 6104 requires an organization to make its Forms 1023 (or 1024 if applicable), 990, and 990-T (Section 501(c)(3)s only) available for public inspection. Indicate how you made these available. Check all that apply.  
 Own website  Another's website  Upon request
- 19** Describe in Schedule O whether (and if so, how), the organization made its governing documents, conflict of interest policy, and financial statements available to the public during the tax year
- 20** State the name, physical address, and telephone number of the person who possesses the books and records of the organization. ► MARILYN POSSIN 510 25TH AVE N ST CLOUD MN 56303-3222 320-253-0765

**Part VII Compensation of Officers, Directors, Trustees, Key Employees, Highest Compensated Employees, and Independent Contractors**

Check if Schedule O contains a response to any question in this Part VII

**Section A. Officers, Directors, Trustees, Key Employees, and Highest Compensated Employees**

**1a** Complete this table for all persons required to be listed. Report compensation for the calendar year ending with or within the organization's tax year.

- List all of the organization's **current** officers, directors, trustees (whether individuals or organizations), regardless of amount of compensation. Enter -0- in columns (D), (E), and (F) if no compensation was paid.
- List all of the organization's **current** key employees, if any. See instructions for definition of "key employee."
- List the organization's **five current** highest compensated employees (other than an officer, director, trustee, or key employee) who received reportable compensation (Box 5 of Form W-2 and/or Box 7 of Form 1099-MISC) of more than \$100,000 from the organization and any related organizations.
- List all of the organization's **former** officers, key employees, and highest compensated employees who received more than \$100,000 of reportable compensation from the organization and any related organizations.
- List all of the organization's **former** directors or trustees that received, in the capacity as a former director or trustee of the organization, more than \$10,000 of reportable compensation from the organization and any related organizations.

List persons in the following order: individual trustees or directors; institutional trustees; officers; key employees; highest compensated employees, and former such persons.

Check this box if neither the organization nor any related organization compensated any current officer, director, or trustee.

(A) Name and Title	(B) Average hours per week (describe hours for related organizations in Schedule O)	(C) Position (do not check more than one box, unless person is both an officer and a director/trustee)						(D) Reportable compensation from the organization (W-2/1099-MISC)	(E) Reportable compensation from related organizations (W-2/1099-MISC)	(F) Estimated amount of other compensation from the organization and related organizations
		Individual trustee or director	Institutional trustee	Officer	Key employee	Highest compensated employee	Former			
(1) KIEL CHRISTENSEN DIRECTOR	1	X					0	0	0	
(2) STEVE FEDDEMA DIRECTOR	1	X					0	0	0	
(3) RICH GALLUS DIRECTOR	1	X					0	0	0	
(4) RYAN GERADS DIRECTOR	1	X					0	0	0	
(5) JOHN HELD DIRECTOR	1	X					0	0	0	
(6) SUZAN HUOT DIRECTOR	1	X					0	0	0	
(7) MATHEW KOOB DIRECTOR	1	X					5,393	0	0	
(8) MARK KROSKA DIRECTOR	1	X					0	0	0	
(9) DANIELLE LIEBL DIRECTOR	1	X					0	0	0	
(10) SUE PECK DIRECTOR	1	X					0	0	0	
(11) TOM REED DIRECTOR	1	X					0	0	0	
(12) CATHI THOMPSON DIRECTOR	1	X					0	0	0	
(13) LYNN WIDSETH DIRECTOR	1	X					0	0	0	
(14) TRACY ARDUSER ADVISORY DIRECTOR	1	X					0	0	0	

**Part VII Section A. Officers, Directors, Trustees, Key Employees, and Highest Compensated Employees (continued)**

(A) Name and title	(B) Average hours per week (describe hours for related organizations in Schedule O)	(C) Position (do not check more than one box, unless person is both an officer and a director/trustee)						(D) Reportable compensation from the organization (W-2/1099-MISC)	(E) Reportable compensation from related organizations (W-2/1099-MISC)	(F) Estimated amount of other compensation from the organization and related organizations
		Individual trustee or director	Institutional trustee	Officer	Key employee	Highest compensated employee	Former			
(15) PATRICIA GRAMKE ADVISORY DIRECTOR	1	X						0	0	0
(16) CORY HEINEN ADVISORY DIRECTOR	1	X						0	0	0
(17) TOM MELLOY ADVISORY DIRECTOR	1	X						0	0	0
(18) SHELLEY GAETZ PRESIDENT	2	X		X				0	0	0
(19) SUSAN SCHLOSSER VICE-PRESIDENT/SECRETARY	2	X		X				0	0	0
(20) KRISTIN SCHMIDT TREASURER	2	X		X				0	0	0
(21)										
(22)										
(23)										
(24)										
(25)										
<b>1b Sub-total</b>								5,393	0	0
<b>c Total from continuation sheets to Part VII, Section A</b>										
<b>d Total (add lines 1b and 1c)</b>								5,393	0	0

**2** Total number of individuals (including but not limited to those listed above) who received more than \$100,000 of reportable compensation from the organization **0**

	Yes	No
<b>3</b> Did the organization list any former officer, director, or trustee, key employee, or highest compensated employee on line 1a? <i>If "Yes," complete Schedule J for such individual</i>		X
<b>4</b> For any individual listed on line 1a, is the sum of reportable compensation and other compensation from the organization and related organizations greater than \$150,000? <i>If "Yes," complete Schedule J for such individual</i>		X
<b>5</b> Did any person listed on line 1a receive or accrue compensation from any unrelated organization or individual for services rendered to the organization? <i>If "Yes," complete Schedule J for such person</i>		X

**Section B. Independent Contractors**

**1** Complete this table for your five highest compensated independent contractors that received more than \$100,000 of compensation from the organization. Report compensation for the calendar year ending with or within the organization's tax year.

(A) Name and business address	(B) Description of services	(C) Compensation
NONE		

**2** Total number of independent contractors (including but not limited to those listed above) who received more than \$100,000 of compensation from the organization **0**

**Part VIII Statement of Revenue**

			(A) Total revenue	(B) Related or exempt function revenue	(C) Unrelated business revenue	(D) Revenue excluded from tax under sections 512, 513, or 514	
<b>Contributions, Gifts, Grants and Other Similar Amounts</b>	<b>1a</b> Federated campaigns	<b>1a</b>					
	<b>b</b> Membership dues	<b>1b</b>					
	<b>c</b> Fundraising events	<b>1c</b>					
	<b>d</b> Related organizations	<b>1d</b>					
	<b>e</b> Government grants (contributions)	<b>1e</b>	14,517				
	<b>f</b> All other contributions, gifts, grants, and similar amounts not included above	<b>1f</b>	92,176				
	<b>g</b> Noncash contributions included in lines 1a-1f: \$						
	<b>h Total.</b> Add lines 1a-1f			106,693			
<b>Program Service Revenue</b>	<b>Business Code</b>						
	<b>2a</b> COMPUTERS GO ROUND	900099	5,879	5,879			
	<b>b</b> SUPER STRIKERS	900099	1,525	1,525			
	<b>c</b> HALLOWEEN	900099	994	994			
	<b>d</b> FINANCIAL ASSISTANCE	900099	406	406			
	<b>e</b> ARTS FOR ALL	900099	65	65			
	<b>f</b> All other program service revenue						
	<b>g Total.</b> Add lines 2a-2f			8,869			
<b>Other Revenue</b>	<b>3</b> Investment income (including dividends, interest, and other similar amounts)		53			53	
	<b>4</b> Income from investment of tax-exempt bond proceeds						
	<b>5</b> Royalties						
	<b>6a</b> Gross rents	(i) Real	(ii) Personal				
	<b>b</b> Less: rental expenses						
	<b>c</b> Rental income or (loss)	0	0				
	<b>d</b> Net rental income or (loss)			0			
	<b>7a</b> Gross amount from sales of assets other than inventory	(i) Securities	(ii) Other				
	<b>b</b> Less: cost or other basis and sales expenses						
	<b>c</b> Gain or (loss)	0	0				
	<b>d</b> Net gain or (loss)			0			
	<b>8a</b> Gross income from fundraising events (not including \$ 0 of contributions reported on line 1c) See Part IV, line 18						
		<b>a</b>	59,031				
<b>b</b> Less: direct expenses		12,239					
<b>c</b> Net income or (loss) from fundraising events			46,792		46,792		
<b>9a</b> Gross income from gaming activities. See Part IV, line 19							
	<b>a</b>						
	<b>b</b> Less: direct expenses						
<b>c</b> Net income or (loss) from gaming activities			0				
<b>10a</b> Gross sales of inventory, less returns and allowances							
	<b>a</b>						
	<b>b</b> Less: cost of goods sold						
<b>c</b> Net income or (loss) from sales of inventory			0				
<b>Miscellaneous Revenue</b>		<b>Business Code</b>					
<b>11a</b> ANNUAL MEETING	900099	850	850				
<b>b</b> MISCELLANEOUS	900099	250	250				
<b>c</b>							
<b>d</b> All other revenue				0			
<b>e Total.</b> Add lines 11a-11d			1,100				
<b>12 Total revenue.</b> See instructions.			163,507	9,969	0	46,845	

**Part IX Statement of Functional Expenses**

Section 501(c)(3) and 501(c)(4) organizations must complete all columns. All other organizations must complete column (A) but are not required to complete columns (B), (C), and (D)

Check if Schedule O contains a response to any question in this Part IX

<b>Do not include amounts reported on lines 6b, 7b, 8b, 9b, and 10b of Part VIII.</b>		(A) Total expenses	(B) Program service expenses	(C) Management and general expenses	(D) Fundraising expenses
1	Grants and other assistance to governments and organizations in the United States. See Part IV, line 21				
2	Grants and other assistance to individuals in the United States. See Part IV, line 22				
3	Grants and other assistance to governments, organizations, and individuals outside the United States. See Part IV, lines 15 and 16				
4	Benefits paid to or for members				
5	Compensation of current officers, directors, trustees, and key employees	48,759	41,445	4,389	2,925
6	Compensation not included above, to disqualified persons (as defined under section 4958(f)(1)) and persons described in section 4958(c)(3)(B)				
7	Other salaries and wages	39,959	33,965	3,596	2,398
8	Pension plan accruals and contributions (include section 401(k) and 403(b) employer contributions)	1,879	1,597	169	113
9	Other employee benefits				
10	Payroll taxes	7,417	6,304	668	445
11	Fees for services (non-employees):				
a	Management				
b	Legal				
c	Accounting				
d	Lobbying				
e	Professional fundraising services. See Part IV, line 17				
f	Investment management fees				
g	Other	182	155	16	11
12	Advertising and promotion				
13	Office expenses	3,427	2,913	309	205
14	Information technology				
15	Royalties				
16	Occupancy	18,020	15,317	1,622	1,081
17	Travel				
18	Payments of travel or entertainment expenses for any federal, state, or local public officials				
19	Conferences, conventions, and meetings	2,747	2,335	247	165
20	Interest	7,500	7,500		
21	Payments to affiliates				
22	Depreciation, depletion, and amortization	931	792	84	55
23	Insurance	3,181	2,703	286	192
24	Other expenses. Itemize expenses not covered above (List miscellaneous expenses in line 24e. If line 24e amount exceeds 10% of line 25, column (A) amount, list line 24e expenses on Schedule O.)				
a	SUPPLIES	3,381	2,873	304	204
b	PROGRAM EXPENSE	23,444	23,444		
c	DUES/SUBSCRIPTIONS	712	605	64	43
d	EQUIPMENT MAINT/RENTAL	3,651	3,104	329	218
e	All other expenses MISCELLANEOUS	754	641	68	45
25	<b>Total functional expenses.</b> Add lines 1 through 24e	165,944	145,693	12,151	8,100
26	<b>Joint costs.</b> Complete this line only if the organization reported in column (B) joint costs from a combined educational campaign and fundraising solicitation. Check here <input type="checkbox"/> if following SOP 98-2 (ASC 958-720)				

**Part X Balance Sheet**

		(A) Beginning of year		(B) End of year
<b>Assets</b>	<b>1</b> Cash—non-interest-bearing . . . . .	33,663	<b>1</b>	5,885
	<b>2</b> Savings and temporary cash investments . . . . .	10,249	<b>2</b>	10,296
	<b>3</b> Pledges and grants receivable, net . . . . .	4,985	<b>3</b>	4,508
	<b>4</b> Accounts receivable, net . . . . .	3,551	<b>4</b>	2,082
	<b>5</b> Receivables from current and former officers, directors, trustees, key employees, and highest compensated employees. Complete Part II of Schedule L . . . . .			
			<b>5</b>	
	<b>6</b> Receivables from other disqualified persons (as defined under section 4958(f)(1)), persons described in section 4958(c)(3)(B), and contributing employers and sponsoring organizations of section 501(c)(9) voluntary employees' beneficiary organizations (see instructions) . . . . .			
			<b>6</b>	
	<b>7</b> Notes and loans receivable, net . . . . .		<b>7</b>	
	<b>8</b> Inventories for sale or use . . . . .		<b>8</b>	
	<b>9</b> Prepaid expenses and deferred charges . . . . .	2,079	<b>9</b>	3,445
	<b>10a</b> Land, buildings, and equipment: cost or other basis. Complete Part VI of Schedule D . . . . .	<b>10a</b> 30,846		
	<b>b</b> Less: accumulated depreciation . . . . .	<b>10b</b> 29,441	2,336	<b>10c</b> 1,405
	<b>11</b> Investments—publicly traded securities . . . . .		<b>11</b>	
	<b>12</b> Investments—other securities See Part IV, line 11 . . . . .		<b>12</b>	
	<b>13</b> Investments—program-related. See Part IV, line 11 . . . . .		<b>13</b>	
<b>14</b> Intangible assets . . . . .		<b>14</b>		
<b>15</b> Other assets. See Part IV, line 11 . . . . .		<b>15</b>		
<b>16</b> <b>Total assets.</b> Add lines 1 through 15 (must equal line 34) . . . . .	56,863	<b>16</b>	27,621	
<b>Liabilities</b>	<b>17</b> Accounts payable and accrued expenses . . . . .	12,695	<b>17</b>	8,781
	<b>18</b> Grants payable . . . . .		<b>18</b>	
	<b>19</b> Deferred revenue . . . . .	29,414	<b>19</b>	15,302
	<b>20</b> Tax-exempt bond liabilities . . . . .		<b>20</b>	
	<b>21</b> Escrow or custodial account liability. Complete Part IV of Schedule D . . . . .		<b>21</b>	
	<b>22</b> Payables to current and former officers, directors, trustees, key employees, highest compensated employees, and disqualified persons. Complete Part II of Schedule L . . . . .			
			<b>22</b>	
	<b>23</b> Secured mortgages and notes payable to unrelated third parties . . . . .		<b>23</b>	
	<b>24</b> Unsecured notes and loans payable to unrelated third parties . . . . .		<b>24</b>	
	<b>25</b> Other liabilities (including federal income tax, payables to related third parties, and other liabilities not included on lines 17-24) Complete Part X of Schedule D . . . . .			
		<b>25</b>		
<b>26</b> <b>Total liabilities.</b> Add lines 17 through 25 . . . . .	42,109	<b>26</b>	24,083	
<b>Net Assets or Fund Balances</b>	<b>Organizations that follow SFAS 117, check here</b> <input checked="" type="checkbox"/> <b>and complete lines 27 through 29, and lines 33 and 34.</b>			
	<b>27</b> Unrestricted net assets . . . . .	10,681	<b>27</b>	1,438
	<b>28</b> Temporarily restricted net assets . . . . .	4,073	<b>28</b>	2,100
	<b>29</b> Permanently restricted net assets . . . . .		<b>29</b>	
	<b>Organizations that do not follow SFAS 117, check here</b> <input type="checkbox"/> <b>and complete lines 30 through 34.</b>			
	<b>30</b> Capital stock or trust principal, or current funds . . . . .		<b>30</b>	
	<b>31</b> Paid-in or capital surplus, or land, building, or equipment fund . . . . .		<b>31</b>	
	<b>32</b> Retained earnings, endowment, accumulated income, or other funds . . . . .		<b>32</b>	
	<b>33</b> <b>Total net assets or fund balances</b> . . . . .	14,754	<b>33</b>	3,538
	<b>34</b> <b>Total liabilities and net assets/fund balances</b> . . . . .	56,863	<b>34</b>	27,621

**Part XI Reconciliation of Net Assets**

Check if Schedule O contains a response to any question in this Part XI

1	Total revenue (must equal Part VIII, column (A), line 12)	1	163,507
2	Total expenses (must equal Part IX, column (A), line 25)	2	165,944
3	Revenue less expenses Subtract line 2 from line 1	3	(2,437)
4	Net assets or fund balances at beginning of year (must equal Part X, line 33, column (A))	4	14,754
5	Other changes in net assets or fund balances (explain in Schedule O)	5	(8,779)
6	Net assets or fund balances at end of year. Combine lines 3, 4, and 5 (must equal Part X, line 33, column (B))	6	3,538

**Part XII Financial Statements and Reporting**

Check if Schedule O contains a response to any question in this Part XII

		Yes	No
1	Accounting method used to prepare the Form 990: <input type="checkbox"/> Cash <input checked="" type="checkbox"/> Accrual <input type="checkbox"/> Other If the organization changed its method of accounting from a prior year or checked "Other," explain in Schedule O.		
2a	Were the organization's financial statements compiled or reviewed by an independent accountant?		X
2b	Were the organization's financial statements audited by an independent accountant?	X	
2c	If "Yes" to line 2a or 2b, does the organization have a committee that assumes responsibility for oversight of the audit, review, or compilation of its financial statements and selection of an independent accountant? If the organization changed either its oversight process or selection process during the tax year, explain in Schedule O.	X	
d	If "Yes" to line 2a or 2b, check a box below to indicate whether the financial statements for the year were issued on a separate basis, consolidated basis, or both: <input checked="" type="checkbox"/> Separate basis <input type="checkbox"/> Consolidated basis <input type="checkbox"/> Both consolidated and separate basis		
3a	As a result of a federal award, was the organization required to undergo an audit or audits as set forth in the Single Audit Act and OMB Circular A-133?		X
3b	If "Yes," did the organization undergo the required audit or audits? If the organization did not undergo the required audit or audits, explain why in Schedule O and describe any steps taken to undergo such audits		N/A

**Public Charity Status and Public Support**

**2011**

**Open to Public Inspection**

Complete if the organization is a section 501(c)(3) organization or a section 4947(a)(1) nonexempt charitable trust.

▶ Attach to Form 990 or Form 990-EZ. ▶ See separate instructions.

Department of the Treasury  
Internal Revenue Service

<b>Name of the organization</b> UNITED CEREBRAL PALSY OF CENTRAL MINNESOTA	<b>Employer identification number</b> 41-0807591
---	---

**Part I Reason for Public Charity Status** (All organizations must complete this part.) See instructions.

The organization is not a private foundation because it is. (For lines 1 through 11, check only one box.)

- 1  A church, convention of churches, or association of churches described in section 170(b)(1)(A)(i).
- 2  A school described in section 170(b)(1)(A)(ii). (Attach Schedule E.)
- 3  A hospital or a cooperative hospital service organization described in section 170(b)(1)(A)(iii).
- 4  A medical research organization operated in conjunction with a hospital described in section 170(b)(1)(A)(iii). Enter the hospital's name, city, and state: \_\_\_\_\_
- 5  An organization operated for the benefit of a college or university owned or operated by a governmental unit described in section 170(b)(1)(A)(iv). (Complete Part II.)
- 6  A federal, state, or local government or governmental unit described in section 170(b)(1)(A)(v).
- 7  An organization that normally receives a substantial part of its support from a governmental unit or from the general public described in section 170(b)(1)(A)(vi). (Complete Part II.)
- 8  A community trust described in section 170(b)(1)(A)(vi). (Complete Part II.)
- 9  An organization that normally receives (1) more than 33 1/3% of its support from contributions, membership fees, and gross receipts from activities related to its exempt functions—subject to certain exceptions, and (2) no more than 33 1/3% of its support from gross investment income and unrelated business taxable income (less section 511 tax) from businesses acquired by the organization after June 30, 1975. See section 509(a)(2). (Complete Part III.)
- 10  An organization organized and operated exclusively to test for public safety. See section 509(a)(4).
- 11  An organization organized and operated exclusively for the benefit of, to perform the functions of, or to carry out the purposes of one or more publicly supported organizations described in section 509(a)(1) or section 509(a)(2). See section 509(a)(3). Check the box that describes the type of supporting organization and complete lines 11e through 11h.
  - a  Type I      b  Type II      c  Type III—Functionally integrated      d  Type III—Other
- e  By checking this box, I certify that the organization is not controlled directly or indirectly by one or more disqualified persons other than foundation managers and other than one or more publicly supported organizations described in section 509(a)(1) or section 509(a)(2).
- f If the organization received a written determination from the IRS that it is a Type I, Type II, or Type III supporting organization, check this box
- g Since August 17, 2006, has the organization accepted any gift or contribution from any of the following persons?
  - (i) A person who directly or indirectly controls, either alone or together with persons described in (ii) and (iii) below, the governing body of the supported organization? 

	Yes	No
11g(i)		
11g(ii)		
11g(iii)		
  - (ii) A family member of a person described in (i) above? 

	Yes	No
11g(ii)		
  - (iii) A 35% controlled entity of a person described in (i) or (ii) above? 

	Yes	No
11g(iii)		
- h Provide the following information about the supported organization(s).

(i) Name of supported organization	(ii) EIN	(iii) Type of organization (described on lines 1–9 above or IRC section (see instructions))	(iv) Is the organization in col (i) listed in your governing document?		(v) Did you notify the organization in col (i) of your support?		(vi) Is the organization in col (i) organized in the U S ?		(vii) Amount of support
			Yes	No	Yes	No	Yes	No	
(A)									
(B)									
(C)									
(D)									
(E)									
<b>Total</b>									0

**Part II Support Schedule for Organizations Described in Sections 170(b)(1)(A)(iv) and 170(b)(1)(A)(vi)**  
 (Complete only if you checked the box on line 5, 7, or 8 of Part I or if the organization failed to qualify under Part III. If the organization fails to qualify under the tests listed below, please complete Part III.)

**Section A. Public Support**

Calendar year (or fiscal year beginning in) ▶	(a) 2007	(b) 2008	(c) 2009	(d) 2010	(e) 2011	(f) Total
<b>1</b> Gifts, grants, contributions, and membership fees received. (Do not include any "unusual grants.") . . . . .	271,266	229,439	210,000	197,184	174,593	1,082,482
<b>2</b> Tax revenues levied for the organization's benefit and either paid to or expended on its behalf . . . . .						
<b>3</b> The value of services or facilities furnished by a governmental unit to the organization without charge . . . . .						
<b>4 Total.</b> Add lines 1 through 3 . . . . .	271,266	229,439	210,000	197,184	174,593	1,082,482
<b>5</b> The portion of total contributions by each person (other than a governmental unit or publicly supported organization) included on line 1 that exceeds 2% of the amount shown on line 11, column (f) . . . . .						
<b>6 Public support.</b> Subtract line 5 from line 4.						1,082,482

**Section B. Total Support**

Calendar year (or fiscal year beginning in) ▶	(a) 2007	(b) 2008	(c) 2009	(d) 2010	(e) 2011	(f) Total
<b>7</b> Amounts from line 4 . . . . .	271,266	229,439	210,000	197,184	174,593	1,082,482
<b>8</b> Gross income from interest, dividends, payments received on securities loans, rents, royalties and income from similar sources . . . . .	1,297	559	259	96	53	2,264
<b>9</b> Net income from unrelated business activities, whether or not the business is regularly carried on . . . . .						
<b>10</b> Other income. Do not include gain or loss from the sale of capital assets (Explain in Part IV) . . . . .	4,858	1,125	1,452	1,057	1,100	9,592
<b>11 Total support.</b> Add lines 7 through 10						1,094,338
<b>12</b> Gross receipts from related activities, etc. (see instructions) . . . . .					<b>12</b>	
<b>13 First five years.</b> If the Form 990 is for the organization's first, second, third, fourth, or fifth tax year as a section 501(c)(3) organization, check this box and <b>stop here</b> . . . . . ▶ <input type="checkbox"/>						

**Section C. Computation of Public Support Percentage**

<b>14</b> Public support percentage for 2011 (line 6, column (f) divided by line 11, column (f)) . . . . .	<b>14</b>	98.92 %
<b>15</b> Public support percentage from 2010 Schedule A, Part II, line 14 . . . . .	<b>15</b>	98.49 %
<b>16a 33 1/3% support test—2011.</b> If the organization did not check the box on line 13, and line 14 is 33 1/3% or more, check this box and <b>stop here.</b> The organization qualifies as a publicly supported organization . . . . . ▶ <input checked="" type="checkbox"/>		
<b>b 33 1/3% support test—2010.</b> If the organization did not check a box on line 13 or 16a, and line 15 is 33 1/3% or more, check this box and <b>stop here.</b> The organization qualifies as a publicly supported organization . . . . . ▶ <input type="checkbox"/>		
<b>17a 10%-facts-and-circumstances test—2011.</b> If the organization did not check a box on line 13, 16a, or 16b, and line 14 is 10% or more, and if the organization meets the "facts-and-circumstances" test, check this box and <b>stop here.</b> Explain in Part IV how the organization meets the "facts-and-circumstances" test. The organization qualifies as a publicly supported organization . . . . . ▶ <input type="checkbox"/>		
<b>b 10%-facts-and-circumstances test—2010.</b> If the organization did not check a box on line 13, 16a, 16b, or 17a, and line 15 is 10% or more, and if the organization meets the "facts-and-circumstances" test, check this box and <b>stop here.</b> Explain in Part IV how the organization meets the "facts-and-circumstances" test. The organization qualifies as a publicly supported organization . . . . . ▶ <input type="checkbox"/>		
<b>18 Private foundation.</b> If the organization did not check a box on line 13, 16a, 16b, 17a, or 17b, check this box and see instructions . . . . . ▶ <input type="checkbox"/>		

**Part III Support Schedule for Organizations Described in Section 509(a)(2)**

(Complete only if you checked the box on line 9 of Part I or if the organization failed to qualify under Part II.

If the organization fails to qualify under the tests listed below, please complete Part II.)

**Section A. Public Support**

Calendar year (or fiscal year beginning in) ►	(a) 2007	(b) 2008	(c) 2009	(d) 2010	(e) 2011	(f) Total
<b>1</b> Gifts, grants, contributions, and membership fees received (Do not include any "unusual grants.")						
<b>2</b> Gross receipts from admissions, merchandise sold or services performed, or facilities furnished in any activity that is related to the organization's tax-exempt purpose						
<b>3</b> Gross receipts from activities that are not an unrelated trade or business under section 513						
<b>4</b> Tax revenues levied for the organization's benefit and either paid to or expended on its behalf						
<b>5</b> The value of services or facilities furnished by a governmental unit to the organization without charge						
<b>6 Total.</b> Add lines 1 through 5						
<b>7a</b> Amounts included on lines 1, 2, and 3 received from disqualified persons						
<b>b</b> Amounts included on lines 2 and 3 received from other than disqualified persons that exceed the greater of \$5,000 or 1% of the amount on line 13 for the year						
<b>c</b> Add lines 7a and 7b						
<b>8 Public support.</b> (Subtract line 7c from line 6.)						

**Section B. Total Support**

Calendar year (or fiscal year beginning in) ►	(a) 2007	(b) 2008	(c) 2009	(d) 2010	(e) 2011	(f) Total
<b>9</b> Amounts from line 6						
<b>10a</b> Gross income from interest, dividends, payments received on securities loans, rents, royalties and income from similar sources						
<b>b</b> Unrelated business taxable income (less section 511 taxes) from businesses acquired after June 30, 1975						
<b>c</b> Add lines 10a and 10b						
<b>11</b> Net income from unrelated business activities not included in line 10b, whether or not the business is regularly carried on						
<b>12</b> Other income. Do not include gain or loss from the sale of capital assets (Explain in Part IV.)						
<b>13 Total support.</b> (Add lines 9, 10c, 11, and 12.)						

**14 First five years.** If the Form 990 is for the organization's first, second, third, fourth, or fifth tax year as a section 501(c)(3) organization, check this box and stop here

**Section C. Computation of Public Support Percentage**

<b>15</b> Public support percentage for 2011 (line 8, column (f) divided by line 13, column (f))	<b>15</b>	%
<b>16</b> Public support percentage from 2010 Schedule A, Part III, line 15	<b>16</b>	%

**Section D. Computation of Investment Income Percentage**

<b>17</b> Investment income percentage for 2011 (line 10c, column (f) divided by line 13, column (f))	<b>17</b>	%
<b>18</b> Investment income percentage from 2010 Schedule A, Part III, line 17	<b>18</b>	%

**19a 33 1/3% support tests—2011.** If the organization did not check the box on line 14, and line 15 is more than 33 1/3%, and line 17 is not more than 33 1/3%, check this box and stop here. The organization qualifies as a publicly supported organization

**b 33 1/3% support tests—2010.** If the organization did not check a box on line 14 or line 19a, and line 16 is more than 33 1/3%, and line 18 is not more than 33 1/3%, check this box and stop here. The organization qualifies as a publicly supported organization

**20 Private foundation.** If the organization did not check a box on line 14, 19a, or 19b, check this box and see instructions

**Part IV** **Supplemental Information.** Complete this part to provide the explanations required by Part II, line 10; Part II, line 17a or 17b; and Part III, line 12. Also complete this part for any additional information (See instructions).

PART II, LINE 10 OTHER INCOME

	2007	2008	2009	2010	2011
INTERN PAYROLL REIMBURSEMENT	3,938				
ANNUAL DINNER AND MISCELLANEOUS	920	1,125	1,452	1,057	1,100
TOTAL	4,858	1,125	1,452	1,057	1,100

Supplemental Financial Statements

2011

Open to Public Inspection

Department of the Treasury Internal Revenue Service

Complete if the organization answered "Yes," to Form 990, Part IV, line 6, 7, 8, 9, 10, 11a, 11b, 11c, 11d, 11e, 11f, 12a, or 12b. Attach to Form 990. See separate instructions.

Name of the organization

Employer identification number

UNITED CEREBRAL PALSY OF CENTRAL MINNESOTA

41-0807591

Part I Organizations Maintaining Donor Advised Funds or Other Similar Funds or Accounts. Complete if the organization answered "Yes" to Form 990, Part IV, line 6.

Table with 2 columns: (a) Donor advised funds, (b) Funds and other accounts. Rows include: 1 Total number at end of year, 2 Aggregate contributions to (during year), 3 Aggregate grants from (during year), 4 Aggregate value at end of year, 5 Did the organization inform all donors and donor advisors in writing that the assets held in donor advised funds are the organization's property, subject to the organization's exclusive legal control?, 6 Did the organization inform all grantees, donors, and donor advisors in writing that grant funds can be used only for charitable purposes and not for the benefit of the donor or donor advisor, or for any other purpose conferring impermissible private benefit?

Part II Conservation Easements. Complete if the organization answered "Yes" to Form 990, Part IV, line 7.

Table with 2 columns: Description, Held at the End of the Tax Year. Rows include: 1 Purpose(s) of conservation easements held by the organization (check all that apply), 2 Complete lines 2a through 2d if the organization held a qualified conservation contribution in the form of a conservation easement on the last day of the tax year, 3 Number of conservation easements modified, transferred, released, extinguished, or terminated by the organization during the tax year, 4 Number of states where property subject to conservation easement is located, 5 Does the organization have a written policy regarding the periodic monitoring, inspection, handling of violations, and enforcement of the conservation easements it holds?, 6 Staff and volunteer hours devoted to monitoring, inspecting, and enforcing conservation easements during the year, 7 Amount of expenses incurred in monitoring, inspecting, and enforcing conservation easements during the year, 8 Does each conservation easement reported on line 2(d) above satisfy the requirements of section 170(h)(4)(B) (i) and section 170(h)(4)(B)(ii)?, 9 In Part XIV, describe how the organization reports conservation easements in its revenue and expense statement, and balance sheet, and include, if applicable, the text of the footnote to the organization's financial statements that describes the organization's accounting for conservation easements.

Part III Organizations Maintaining Collections of Art, Historical Treasures, or Other Similar Assets. Complete if the organization answered "Yes" to Form 990, Part IV, line 8.

Table with 2 columns: Description, Amount. Rows include: 1a If the organization elected, as permitted under SFAS 116 (ASC 958), not to report in its revenue statement and balance sheet works of art, historical treasures, or other similar assets held for public exhibition, education, or research in furtherance of public service, provide, in Part XIV, the text of the footnote to its financial statements that describes these items. 1b If the organization elected, as permitted under SFAS 116 (ASC 958), to report in its revenue statement and balance sheet works of art, historical treasures, or other similar assets held for public exhibition, education, or research in furtherance of public service, provide the following amounts relating to these items: (i) Revenues included in Form 990, Part VIII, line 1, (ii) Assets included in Form 990, Part X. 2 If the organization received or held works of art, historical treasures, or other similar assets for financial gain, provide the following amounts required to be reported under SFAS 116 (ASC 958) relating to these items: a Revenues included in Form 990, Part VIII, line 1, b Assets included in Form 990, Part X.

**Part III Organizations Maintaining Collections of Art, Historical Treasures, or Other Similar Assets (continued)**

- 3 Using the organization's acquisition, accession, and other records, check any of the following that are a significant use of its collection items (check all that apply).
- a  Public exhibition
  - b  Scholarly research
  - c  Preservation for future generations
  - d  Loan or exchange programs
  - e  Other \_\_\_\_\_
- 4 Provide a description of the organization's collections and explain how they further the organization's exempt purpose in Part XIV.
- 5 During the year, did the organization solicit or receive donations of art, historical treasures, or other similar assets to be sold to raise funds rather than to be maintained as part of the organization's collection?  Yes  No

**Part IV Escrow and Custodial Arrangements.** Complete if the organization answered "Yes" to Form 990, Part IV, line 9, or reported an amount on Form 990, Part X, line 21.

- 1a Is the organization an agent, trustee, custodian or other intermediary for contributions or other assets not included on Form 990, Part X?  Yes  No
- b If "Yes," explain the arrangement in Part XIV and complete the following table:
- |                                 | Amount |
|---------------------------------|--------|
| c Beginning balance             | 1c     |
| d Additions during the year     | 1d     |
| e Distributions during the year | 1e     |
| f Ending balance                | 1f     |
- 2a Did the organization include an amount on Form 990, Part X, line 21?  Yes  No
- b If "Yes," explain the arrangement in Part XIV.

**Part V Endowment Funds.** Complete if the organization answered "Yes" to Form 990, Part IV, line 10.

	(a) Current year	(b) Prior year	(c) Two years back	(d) Three years back	(e) Four years back
1a Beginning of year balance					
b Contributions					
c Net investment earnings, gains, and losses					
d Grants or scholarships					
e Other expenditures for facilities and programs					
f Administrative expenses					
g End of year balance					

- 2 Provide the estimated percentage of the current year end balance (line 1g, column (a)) held as:
- a Board designated or quasi-endowment  \_\_\_\_\_ %
  - b Permanent endowment  \_\_\_\_\_ %
  - c Temporarily restricted endowment  \_\_\_\_\_ %
- The percentages in lines 2a, 2b, and 2c should equal 100%.
- 3a Are there endowment funds not in the possession of the organization that are held and administered for the organization by:
- |   | Yes    | No |
|---|--------|----|
| (i) unrelated organizations   | 3a(i)  |    |
| (ii) related organizations  | 3a(ii) |    |
| b If "Yes" to 3a(ii), are the related organizations listed as required on Schedule R? | 3b     |    |
- 4 Describe in Part XIV the intended uses of the organization's endowment funds.

**Part VI Land, Buildings, and Equipment.** See Form 990, Part X, line 10.

Description of property	(a) Cost or other basis (investment)	(b) Cost or other basis (other)	(c) Accumulated depreciation	(d) Book value
1a Land				
b Buildings				
c Leasehold improvements				
d Equipment		30,846	29,441	1,405
e Other				

Total. Add lines 1a through 1e. (Column (d) must equal Form 990, Part X, column (B), line 10(c).) 1,405

**Part VII Investments—Other Securities.** See Form 990, Part X, line 12.

(a) Description of security or category (including name of security)	(b) Book value	(c) Method of valuation: Cost or end-of-year market value
(1) Financial derivatives		
(2) Closely-held equity interests		
(3) Other		
(A)		
(B)		
(C)		
(D)		
(E)		
(F)		
(G)		
(H)		
(I)		
<b>Total.</b> (Column (b) must equal Form 990, Part X, col (B) line 12.) ▶		

**Part VIII Investments—Program Related.** See Form 990, Part X, line 13.

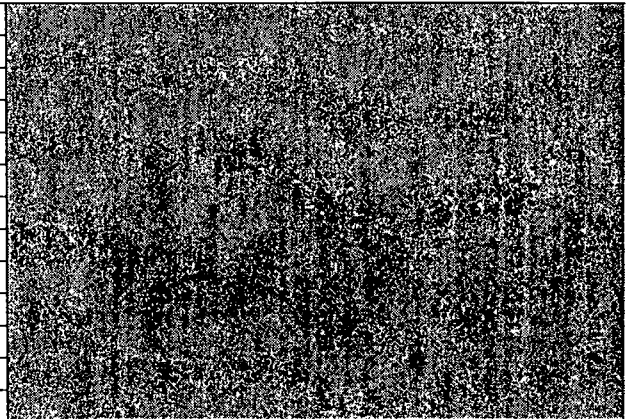
(a) Description of investment type	(b) Book value	(c) Method of valuation Cost or end-of-year market value
(1)		
(2)		
(3)		
(4)		
(5)		
(6)		
(7)		
(8)		
(9)		
(10)		
<b>Total.</b> (Column (b) must equal Form 990, Part X, col (B) line 13.) ▶		

**Part IX Other Assets.** See Form 990, Part X, line 15.

(a) Description	(b) Book value
(1)	
(2)	
(3)	
(4)	
(5)	
(6)	
(7)	
(8)	
(9)	
(10)	
<b>Total.</b> (Column (b) must equal Form 990, Part X, col. (B) line 15.) ▶	

**Part X Other Liabilities.** See Form 990, Part X, line 25.

1. (a) Description of liability	(b) Book value
(1) Federal income taxes	
(2)	
(3)	
(4)	
(5)	
(6)	
(7)	
(8)	
(9)	
(10)	
(11)	
<b>Total.</b> (Column (b) must equal Form 990, Part X, col. (B) line 25.) ▶	



2. FIN 48 (ASC 740) Footnote. In Part XIV, provide the text of the footnote to the organization's financial statements that reports the organization's liability for uncertain tax positions under FIN 48 (ASC 740)

**Part XI Reconciliation of Change in Net Assets from Form 990 to Audited Financial Statements**

<b>1</b>	Total revenue (Form 990, Part VIII, column (A), line 12)	<b>1</b>	163,507
<b>2</b>	Total expenses (Form 990, Part IX, column (A), line 25)	<b>2</b>	165,944
<b>3</b>	Excess or (deficit) for the year Subtract line 2 from line 1	<b>3</b>	(2,437)
<b>4</b>	Net unrealized gains (losses) on investments	<b>4</b>	
<b>5</b>	Donated services and use of facilities	<b>5</b>	3,450
<b>6</b>	Investment expenses	<b>6</b>	
<b>7</b>	Prior period adjustments	<b>7</b>	
<b>8</b>	Other (Describe in Part XIV.)	<b>8</b>	(3,450)
<b>9</b>	Total adjustments (net). Add lines 4 through 8	<b>9</b>	0
<b>10</b>	Excess or (deficit) for the year per audited financial statements. Combine lines 3 and 9	<b>10</b>	(2,437)

**Part XII Reconciliation of Revenue per Audited Financial Statements With Revenue per Return**

<b>1</b>	Total revenue, gains, and other support per audited financial statements	<b>1</b>	179,196
<b>2</b>	Amounts included on line 1 but not on Form 990, Part VIII, line 12:		
<b>a</b>	Net unrealized gains on investments	<b>2a</b>	
<b>b</b>	Donated services and use of facilities	<b>2b</b>	3,450
<b>c</b>	Recoveries of prior year grants	<b>2c</b>	
<b>d</b>	Other (Describe in Part XIV.)	<b>2d</b>	12,239
<b>e</b>	Add lines <b>2a</b> through <b>2d</b>	<b>2e</b>	15,689
<b>3</b>	Subtract line <b>2e</b> from line <b>1</b>	<b>3</b>	163,507
<b>4</b>	Amounts included on Form 990, Part VIII, line 12, but not on line 1:		
<b>a</b>	Investment expenses not included on Form 990, Part VIII, line 7b	<b>4a</b>	
<b>b</b>	Other (Describe in Part XIV.)	<b>4b</b>	
<b>c</b>	Add lines <b>4a</b> and <b>4b</b>	<b>4c</b>	0
<b>5</b>	Total revenue Add lines <b>3</b> and <b>4c</b> . (This must equal Form 990, Part I, line 12.)	<b>5</b>	163,507

**Part XIII Reconciliation of Expenses per Audited Financial Statements With Expenses per Return**

<b>1</b>	Total expenses and losses per audited financial statements	<b>1</b>	181,633
<b>2</b>	Amounts included on line 1 but not on Form 990, Part IX, line 25:		
<b>a</b>	Donated services and use of facilities	<b>2a</b>	3,450
<b>b</b>	Prior year adjustments	<b>2b</b>	
<b>c</b>	Other losses	<b>2c</b>	
<b>d</b>	Other (Describe in Part XIV.)	<b>2d</b>	12,239
<b>e</b>	Add lines <b>2a</b> through <b>2d</b>	<b>2e</b>	15,689
<b>3</b>	Subtract line <b>2e</b> from line <b>1</b>	<b>3</b>	165,944
<b>4</b>	Amounts included on Form 990, Part IX, line 25, but not on line 1:		
<b>a</b>	Investment expenses not included on Form 990, Part VIII, line 7b	<b>4a</b>	
<b>b</b>	Other (Describe in Part XIV.)	<b>4b</b>	
<b>c</b>	Add lines <b>4a</b> and <b>4b</b>	<b>4c</b>	0
<b>5</b>	Total expenses. Add lines <b>3</b> and <b>4c</b> . (This must equal Form 990, Part I, line 18.)	<b>5</b>	165,944

**Part XIV Supplemental Information**

Complete this part to provide the descriptions required for Part II, lines 3, 5, and 9; Part III, lines 1a and 4; Part IV, lines 1b and 2b; Part V, line 4; Part X, line 2; Part XI, line 8; Part XII, lines 2d and 4b; and Part XIII, lines 2d and 4b. Also complete this part to provide any additional information.

PART XI LINE 8 DONATED SERVICES EXPENSED

PART XII LINE 2d DIRECT EVENT EXPENSES

PART XIII LINE 2d DIRECT EVENT EXPENSES





**Part II Fundraising Events.** Complete if the organization answered "Yes" to Form 990, Part IV, line 18, or reported more than \$15,000 of fundraising event contributions and gross income on Form 990-EZ, lines 1 and 6b. List events with gross receipts greater than \$5,000.

		(a) Event #1	(b) Event #2	(c) Other events	(d) Total events (add col (a) through col (c))	
		STUCK IN MOTION (event type)	GOLF TOUR (event type)	E-WASTE (total number)		
Revenue	1	Gross receipts . . . . .	29,034	13,959	8,482	CONTINUED
	2	Less: Charitable contributions . . . . .				
	3	Gross income (line 1 minus line 2) . . . . .	29,034	13,959	8,482	CONTINUED
Direct Expenses	4	Cash prizes . . . . .				
	5	Noncash prizes . . . . .				
	6	Rent/facility costs . . . . .	236	2,076		CONTINUED
	7	Food and beverages . . . . .		945		CONTINUED
	8	Entertainment . . . . .				
	9	Other direct expenses . . . . .	1,438	1,114	5,695	CONTINUED
	10	Direct expense summary. Add lines 4 through 9 in column (d) . . . . . ▶				
11	Net income summary. Combine line 3, column (d), and line 10 . . . . . ▶					CONTINUED

**Part III Gaming.** Complete if the organization answered "Yes" to Form 990, Part IV, line 19, or reported more than \$15,000 on Form 990-EZ, line 6a.

		(a) Bingo	(b) Pull tabs/instant bingo/progressive bingo	(c) Other gaming	(d) Total gaming (add col (a) through col (c))	
Revenue	1	Gross revenue . . . . .				
Direct Expenses	2	Cash prizes . . . . .				
	3	Noncash prizes . . . . .				
	4	Rent/facility costs . . . . .				
	5	Other direct expenses . . . . .				
	6	Volunteer labor . . . . .	<input type="checkbox"/> Yes _____ % <input type="checkbox"/> No	<input type="checkbox"/> Yes _____ % <input type="checkbox"/> No	<input type="checkbox"/> Yes _____ % <input type="checkbox"/> No	
	7	Direct expense summary. Add lines 2 through 5 in column (d) . . . . . ▶				( )
	8	Net gaming income summary. Combine line 1, column d, and line 7 . . . . . ▶				

9 Enter the state(s) in which the organization operates gaming activities: \_\_\_\_\_

a Is the organization licensed to operate gaming activities in each of these states?  Yes  No

b If "No," explain: \_\_\_\_\_  
 \_\_\_\_\_  
 \_\_\_\_\_

10a Were any of the organization's gaming licenses revoked, suspended or terminated during the tax year?  Yes  No

b If "Yes," explain: \_\_\_\_\_  
 \_\_\_\_\_  
 \_\_\_\_\_

**Part II Fundraising Events.** Complete if the organization answered "Yes" to Form 990, Part IV, line 18, or reported more than \$15,000 of fundraising event contributions and gross income on Form 990-EZ, lines 1 and 6b. List events with gross receipts greater than \$5,000.

		(a) Event #1	(b) Event #2	(c) Other events	(d) Total events (add col. (a) through col. (c))
		CRAFTS DIRECT (event type)	OTHER (event type)	(total number)	
Revenue	<b>1</b> Gross receipts . . . . .	5,100	2,456		59,031
	<b>2</b> Less: Charitable contributions . . . . .				
	<b>3</b> Gross income (line 1 minus line 2) . . . . .	5,100	2,456		59,031
Direct Expenses	<b>4</b> Cash prizes . . . . .				
	<b>5</b> Noncash prizes . . . . .				
	<b>6</b> Rent/facility costs . . . . .		130		2,442
	<b>7</b> Food and beverages . . . . .				945
	<b>8</b> Entertainment . . . . .				
	<b>9</b> Other direct expenses . . . . .	0	605		8,852
	<b>10</b> Direct expense summary. Add lines 4 through 9 in column (d) . . . . . ▶				
<b>11</b> Net income summary. Combine line 3, column (d), and line 10 . . . . . ▶					46,792

**Part III Gaming.** Complete if the organization answered "Yes" to Form 990, Part IV, line 19, or reported more than \$15,000 on Form 990-EZ, line 6a.

		(a) Bingo	(b) Pull tabs/instant bingo/progressive bingo	(c) Other gaming	(d) Total gaming (add col. (a) through col. (c))	
Revenue	<b>1</b> Gross revenue . . . . .					
Direct Expenses	<b>2</b> Cash prizes . . . . .					
	<b>3</b> Noncash prizes . . . . .					
	<b>4</b> Rent/facility costs . . . . .					
	<b>5</b> Other direct expenses . . . . .					
	<b>6</b> Volunteer labor . . . . .	<input type="checkbox"/> Yes _____ % <input type="checkbox"/> No	<input type="checkbox"/> Yes _____ % <input type="checkbox"/> No	<input type="checkbox"/> Yes _____ % <input type="checkbox"/> No		
	<b>7</b> Direct expense summary. Add lines 2 through 5 in column (d) . . . . . ▶					( )
	<b>8</b> Net gaming income summary. Combine line 1, column d, and line 7 . . . . . ▶					

**9** Enter the state(s) in which the organization operates gaming activities: \_\_\_\_\_

**a** Is the organization licensed to operate gaming activities in each of these states?  Yes  No

**b** If "No," explain: \_\_\_\_\_  
 \_\_\_\_\_  
 \_\_\_\_\_

**10a** Were any of the organization's gaming licenses revoked, suspended or terminated during the tax year?  Yes  No

**b** If "Yes," explain: \_\_\_\_\_  
 \_\_\_\_\_  
 \_\_\_\_\_



# Supplemental Information to Form 990 or 990-EZ

Complete to provide information for responses to specific questions on  
Form 990 or 990-EZ or to provide any additional information.

▶ Attach to Form 990 or 990-EZ.

**2011**

**Open to Public  
Inspection**

Name of the organization

UNITED CEREBRAL PALSY OF CENTRAL MINNESOTA

Employer identification number

41-0807591

PART VI LINE 11b

THE 990 IS REVIEWED BY THE BOARD OF DIRECTORS AT A MEETING OF THE DIRECTORS AND  
APPROVED FOR FILING BY THE DIRECTORS PRIOR TO FILING.

PART VI LINE 12c

THE ORGANIZATION REQUIRES EACH DIRECTOR, OFFICER AND STAFF MEMBER TO SIGN A CONFLICT  
OF INTEREST STATEMENT ANNUALLY. NEW DIRECTORS, OFFICERS AND STAFF MEMBERS ARE REQUIRED  
TO SIGN THIS DISCLOSURE UPON BEING APPOINTED OR HIRED. THE DISCLOSURE STATEMENT INCLUDES  
A STATEMENT REQUIRING THESE PERSONS TO DISCLOSE ANY POTENTIAL CONFLICTS THEY BECOME  
AWARE OF TO THE PRESIDENT ON AN ONGOING BASIS, AS THEY BECOME AWARE OF THEM.

PART VI LINE 15a

THE COMPENSATION OF THE EXECUTIVE DIRECTOR IS RECOMMENDED TO THE BOARD OF DIRECTORS  
BY THE EXECUTIVE COMMITTEE OF THE BOARD. NO PERSONS WITH CONFLICTS OF INTEREST WITH  
RESPECT TO THE COMPENSATION ARRANGEMENT ARE INVOLVED IN THE REVIEW AND APPROVAL OF  
COMPENSATION. FINAL APPROVAL IS GIVEN BY THE BOARD OF DIRECTORS. THE COMPENSATION OF  
THE EXECUTIVE DIRECTOR IS REVIEWED AND APPROVED USING DATA AS TO COMPARABLE  
COMPENSATION FOR SIMILARY QUALIFIED PERSONS IN FUNCTIONALLY COMPARABLE POSITIONS AT  
SIMILARY SITUATED ORGANIZATIONS, WITHIN THE BUDGET CONSTRAINTS OF THE ORGANIZATION.

PART VI LINE 19

THE ORGANIZATION MAKES ITS GOVERNING DOCUMENTS, CONFLICT OF INTEREST POLICY, AND  
FINANCIAL STATEMENTS AVAILABLE TO THE PUBLIC UPON REQUEST.

PART XI LINE 5

RESTATED FOR ACCRUED PAID TIME OFF, NOT PREVIOUSLY ACCRUED.

Name of the organization

UNITED CEREBRAL PALSY OF CENTRAL MINNESOTA

Employer identification number

41-08077591

AMENDED RETURN

THIS RETURN HAS BEEN AMENDED TO REFLECT A \$2,537 REDUCTION IN EVENT INCOME FOR AN AMOUNT THAT SHOULD HAVE BEEN DEFERRED UNTIL FISCAL YEAR ENDING 09/30/2013. AMOUNTS RECEIVED AS OF 09/30/2012, FOR AN EVENT OCCURRING IN OCTOBER 2012, WERE INADVERTENTLY INCLUDED IN INCOME FOR THE FISCAL YEAR ENDING 09/30/2012. THIS AMOUNT HAS BEEN INCLUDED IN DEFERRED INCOME ON THIS AMENDED RETURN. THE FOLLOWING PAGES/SCHEDULES HAVE BEEN AMENDED TO REFLECT THIS CHANGE:

FORM 990, PAGE 1, LINES 11, 12, 19, 21 AND 22

FORM 990, PAGE 9, LINES 8a, 8c AND 12

FORM 990, PAGE 11, LINES 19, 26, 27 AND 33

FORM 990, PAGE 12, PART XI, LINES 1, 3 AND 6

SCHEDULE A, PAGE 2, LINES 1, 4, 6, 7 AND 11

SCHEDULE D, PAGE 4, PART XI, LINES 1, 3 AND 10

SCHEDULE D, PAGE 4, PART XII, LINES 1, 3 AND 5

SCHEDULE G, PAGE 2a, PART II, LINES 1, 3 AND 11