

Return of Organization Exempt From Income Tax
Under section 501(c), 527, or 4947(a)(1) of the Internal Revenue Code (except black lung benefit trust or private foundation)

Department of the Treasury Internal Revenue Service

The organization may have to use a copy of this return to satisfy state reporting requirements

A For the 2005 calendar year, or tax year beginning 07/01, 2005, and ending 06/30/2006

B Check if applicable: X Address change. C Name of organization: NEW YORK ACADEMY OF SCIENCES. D Employer identification number: 13-1773640. E Telephone number: (212) 298-8606. F Accounting method: X Accrual.

Section 501(c)(3) organizations and 4947(a)(1) nonexempt charitable trusts must attach a completed Schedule A (Form 990 or 990-EZ).

G Website: WWW.NYAS.ORG

J Organization type (check only one) X 501(c)(3) 4947(a)(1) 527

K Check here if the organization's gross receipts are normally not more than \$25,000. The organization need not file a return with the IRS, but if the organization chooses to file a return, be sure to file a complete return. Some states require a complete return.

H and I are not applicable to section 527 organizations

H(a) Is this a group return for affiliates? Yes No X

H(b) If "Yes," enter number of affiliates

H(c) Are all affiliates included? Yes No

H(d) Is this a separate return filed by an organization covered by a group ruling? Yes No X

I Group Exemption Number

M Check if the organization is not required to attach Sch B (Form 990, 990-EZ, or 990-PF)

L Gross receipts Add lines 6b, 8b, 9b, and 10b to line 12 40,615,829.

Part I Revenue, Expenses, and Changes in Net Assets or Fund Balances (See the instructions)

Table with 21 rows and 4 columns. Rows include: 1 Contributions, gifts, grants, and similar amounts received; 2 Program service revenue including government fees and contracts; 3 Membership dues and assessments; 4 Interest on savings and temporary cash investments; 5 Dividends and interest from securities; 6a Gross rents; 6b Less rental expenses; 6c Net rental income or (loss); 7 Other investment income; 8a Gross amount from sales of assets other than inventory; 8b Less cost or other basis and sales expenses; 8c Gain or (loss); 8d Net gain or (loss); 9 Special events and activities; 9a Gross revenue; 9b Less direct expenses; 9c Net income or (loss); 10a Gross sales of inventory; 10b Less cost of goods sold; 10c Gross profit or (loss); 11 Other revenue; 12 Total revenue; 13 Program services; 14 Management and general; 15 Fundraising; 16 Payments to affiliates; 17 Total expenses; 18 Excess or (deficit) for the year; 19 Net assets or fund balances at beginning of year; 20 Other changes in net assets or fund balances; 21 Net assets or fund balances at end of year.

SCANNED JUL 14 2007

RECEIVED MAY 20 2007 OCT 11 2007

For Privacy Act and Paperwork Reduction Act Notice, see the separate instructions.

915 8

Part II Statement of Functional Expenses All organizations must complete column (A) Columns (B), (C), and (D) are required for section 501(c)(3) and (4) organizations and section 4947(a)(1) nonexempt charitable trusts but optional for others (See the instructions)

Do not include amounts reported on line 6b, 8b, 9b, 10b, or 16 of Part I		(A) Total	(B) Program services	(C) Management and general	(D) Fundraising
22	Grants and allocations (attach schedule) (cash \$ _____ noncash \$ _____) If this amount includes foreign grants, check here <input type="checkbox"/>	NONE	NONE		
23	Specific assistance to individuals (attach schedule)				
24	Benefits paid to or for members (attach schedule)				
25	Compensation of officers, directors, etc	553,364.	355,218.	161,893.	36,253.
26	Other salaries and wages	3,509,363.	2,252,777.	1,026,893.	229,693.
27	Pension plan contributions	299,255.	192,609.	90,748.	15,898.
28	Other employee benefits	430,245.	276,917.	130,471.	22,857.
29	Payroll taxes	297,314.	191,492.	90,073.	15,749.
30	Professional fundraising fees				
31	Accounting fees	67,390.		67,390.	
32	Legal fees	50,490.		50,490.	
33	Supplies	366,950.	213,031.	153,093.	826.
34	Telephone	91,686.	17,910.	71,124.	2,652.
35	Postage and shipping	273,636.	241,466.	26,768.	5,402.
36	Occupancy	1,513,439.		1,513,439.	
37	Equipment rental and maintenance	122,875.	38,383.	84,492.	
38	Printing and publications	617,444.	577,928.	26,355.	13,161.
39	Travel	242,940.	204,619.	32,643.	5,678.
40	Conferences, conventions, and meetings	85,044.	49,720.	28,538.	6,786.
41	Interest	33,672.		33,672.	
42	Depreciation, depletion, etc (attach schedule)	177,650.	74,981.	102,669.	STMT 17
43	Other expenses not covered above (itemize)				
a	FOOD	971,402.	763,331.	32,829.	175,242.
b	OVERHEAD	-478,353.	1,851,989.	-2,485,358.	155,016.
c	BAD DEBTS	82,082.		82,082.	
d	CONSULTANTS	1,501,571.	796,353.	416,558.	288,660.
e	INSURANCE	48,734.		48,734.	
f	OTHER	223,007.	114,334.	22,286.	86,387.
g					
44	Total functional expenses. Add lines 22 through 43 (Organizations completing columns (B)-(D), carry these totals to lines 13-15).	11,081,200.	8,213,058.	1,807,882.	1,060,260.

Joint Costs. Check if you are following SOP 98-2.
 Are any joint costs from a combined educational campaign and fundraising solicitation reported in (B) Program services? Yes No
 If "Yes," enter (i) the aggregate amount of these joint costs \$ _____, (ii) the amount allocated to Program services \$ _____,
 (iii) the amount allocated to Management and general \$ _____, and (iv) the amount allocated to Fundraising \$ _____

Part IV Balance Sheets (See the instructions.)

		(A) Beginning of year		(B) End of year	
Note: Where required, attached schedules and amounts within the description column should be for end-of-year amounts only					
Assets	45	Cash - non-interest-bearing	247,700.	45	685,799.
	46	Savings and temporary cash investments	653,060.	46	2,453,000.
	47a	Accounts receivable	47a 691,667.		
	b	Less: allowance for doubtful accounts	47b 42,036.	480,387.	47c 649,631.
	48a	Pledges receivable	48a		48c
	b	Less: allowance for doubtful accounts	48b		
	49	Grants receivable	672,763.	49	280,519.
	50	Receivables from officers, directors, trustees, and key employees (attach schedule)		50	
	51a	Other notes and loans receivable (attach schedule)	51a		51c
	b	Less: allowance for doubtful accounts	51b		
	52	Inventories for sale or use		52	
	53	Prepaid expenses and deferred charges	351,185.	53	492,903.
	54	Investments - securities (attach schedule) STMT 6. <input type="checkbox"/> Cost <input checked="" type="checkbox"/> FMV	300,000.	54	19,515,557.
	55a	Investments - land, buildings, and equipment, basis	55a NONE		
	b	Less: accumulated depreciation (attach schedule)	55b 666,703.	55c	NONE
56	Investments - other (attach schedule)		56		
57a	Land, buildings, and equipment basis	57a 7,692,986.			
b	Less: accumulated depreciation (attach schedule) STMT 7	57b 3,985,292.	549,844.	57c 3,707,694.	
58	Other assets (describe <input type="checkbox"/> STMT 7)	6,250,000.	58	293,731.	
59 Total assets (must equal line 74). Add lines 45 through 58.		10,171,642.	59	28,078,834.	
Liabilities	60	Accounts payable and accrued expenses	1,270,494.	60	1,679,161.
	61	Grants payable		61	
	62	Deferred revenue	2,288,042.	62	2,155,750.
	63	Loans from officers, directors, trustees, and key employees (attach schedule)		63	
	64a	Tax-exempt bond liabilities (attach schedule)		64a	
	b	Mortgages and other notes payable (attach schedule)	1,440,000.	64b	NONE
65	Other liabilities (describe <input type="checkbox"/>)	6,250,000.	65	NONE	
66 Total liabilities. Add lines 60 through 65		11,248,536.	66	3,834,911.	
Organizations that follow SFAS 117, check here <input checked="" type="checkbox"/> and complete lines 67 through 69 and lines 73 and 74.					
Net Assets or Fund Balances	67	Unrestricted	-2,760,714.	67	23,132,827.
	68	Temporarily restricted	774,138.	68	701,096.
	69	Permanently restricted	909,682.	69	410,000.
	Organizations that do not follow SFAS 117, check here <input type="checkbox"/> and complete lines 70 through 74				
	70	Capital stock, trust principal, or current funds		70	
	71	Paid-in or capital surplus, or land, building, and equipment fund		71	
	72	Retained earnings, endowment, accumulated income, or other funds		72	
73	Total net assets or fund balances (add lines 67 through 69 or lines 70 through 72; column (A) must equal line 19; column (B) must equal line 21)	-1,076,894.	73	24,243,923.	
74	Total liabilities and net assets/fund balances. Add lines 66 and 73.	10,171,642.	74	28,078,834.	

Part V-A Current Officers, Directors, Trustees, and Key Employees (continued)

75a Enter the total number of officers, directors, and trustees permitted to vote on organization business at board meetings 21
75b Are any officers, directors, trustees, or key employees listed in Form 990, Part V-A, or highest compensated employees listed in Schedule A, Part I, or highest compensated professional and other independent contractors listed in Schedule A, Part II-A or II-B, related to each other through family or business relationships? If "Yes," attach a statement that identifies the individuals and explains the relationship(s)
75c Do any officers, directors, trustees, or key employees listed in Form 990, Part V-A, or highest compensated employees listed in Schedule A, Part I, or highest compensated professional and other independent contractors listed in Schedule A, Part II-A or II-B, receive compensation from any other organizations, whether tax exempt or taxable, that are related to this organization through common supervision or common control? Note. Related organizations include section 509(a)(3) supporting organizations
75d Does the organization have a written conflict of interest policy?

Part V-B Former Officers, Directors, Trustees, and Key Employees That Received Compensation or Other Benefits (If any former officer, director, trustee, or key employee received compensation or other benefits (described below) during the year, list that person below and enter the amount of compensation or other benefits in the appropriate column. See the instructions)

Table with 5 columns: (A) Name and address, (B) Loans and Advances, (C) Compensation, (D) Contributions to employee benefit plans & deferred compensation plans, (E) Expense account and other allowances. Row 1 shows -0- in all columns.

Part VI Other Information (See the instructions.)

76 Did the organization engage in any activity not previously reported to the IRS? If "Yes," attach a detailed description of each activity.
77 Were any changes made in the organizing or governing documents but not reported to the IRS? If "Yes," attach a conformed copy of the changes.
78a Did the organization have unrelated business gross income of \$1,000 or more during the year covered by this return?
78b If "Yes," has it filed a tax return on Form 990-T for this year?
79 Was there a liquidation, dissolution, termination, or substantial contraction during the year? If "Yes," attach a statement.
80a Is the organization related (other than by association with a statewide or nationwide organization) through common membership, governing bodies, trustees, officers, etc., to any other exempt or nonexempt organization?
80b If "Yes," enter the name of the organization AMERICAN INSTITUTE OF THE CITY OF NEW YORK and check whether it is [X] exempt or [] nonexempt
81a Enter direct and indirect political expenditures (See line 81 instructions.) NONE
81b Did the organization file Form 1120-POL for this year?

Part VI Other Information (continued)

82a Did the organization receive donated services or the use of materials, equipment, or facilities at no charge or at substantially less than fair rental value? 82a X
82b If "Yes," you may indicate the value of these items here Do not include this amount as revenue in Part I or as an expense in Part II (See instructions in Part III) 82b 26,258.
83a Did the organization comply with the public inspection requirements for returns and exemption applications? 83a X
83b Did the organization comply with the disclosure requirements relating to quid pro quo contributions? 83b X
84a Did the organization solicit any contributions or gifts that were not tax deductible? 84a N/A
84b If "Yes," did the organization include with every solicitation an express statement that such contributions or gifts were not tax deductible? 84b N/A
85 501(c)(4), (5), or (6) organizations a Were substantially all dues nondeductible by members? 85a N/A
b Did the organization make only in-house lobbying expenditures of \$2,000 or less? 85b N/A
If "Yes" was answered to either 85a or 85b, do not complete 85c through 85h below unless the organization received a waiver for proxy tax owed for the prior year
c Dues, assessments, and similar amounts from members 85c N/A
d Section 162(e) lobbying and political expenditures 85d N/A
e Aggregate nondeductible amount of section 6033(e)(1)(A) dues notices 85e N/A
f Taxable amount of lobbying and political expenditures (line 85d less 85e) 85f N/A
g Does the organization elect to pay the section 6033(e) tax on the amount on line 85f? 85g N/A
h If section 6033(e)(1)(A) dues notices were sent, does the organization agree to add the amount on line 85f to its reasonable estimate of dues allocable to nondeductible lobbying and political expenditures for the following tax year? 85h N/A
86 501(c)(7) orgs Enter a Initiation fees and capital contributions included on line 12 86a N/A
b Gross receipts, included on line 12, for public use of club facilities 86b N/A
87 501(c)(12) orgs Enter a Gross income from members or shareholders 87a N/A
b Gross income from other sources (Do not net amounts due or paid to other sources against amounts due or received from them) 87b N/A
88 At any time during the year, did the organization own a 50% or greater interest in a taxable corporation or partnership, or an entity disregarded as separate from the organization under Regulations sections 301.7701-2 and 301.7701-3? If "Yes," complete Part IX 88 X
89a 501(c)(3) organizations Enter Amount of tax imposed on the organization during the year under section 4911 NONE, section 4912 NONE, section 4955 NONE NONE
b 501(c)(3) and 501(c)(4) orgs Did the organization engage in any section 4958 excess benefit transaction during the year or did it become aware of an excess benefit transaction from a prior year? If "Yes," attach a statement explaining each transaction 89b X
c Enter Amount of tax imposed on the organization managers or disqualified persons during the year under sections 4912, 4955, and 4958 NONE
d Enter Amount of tax on line 89c, above, reimbursed by the organization NONE
90a List the states with which a copy of this return is filed NY,
b Number of employees employed in the pay period that includes March 12, 2005 (See instructions) 90b 65
91a The books are in care of THE ORGANIZATION Telephone no 212-298-8606
Located at 7 WTC, 250 GREENWICH STREET NEW YORK, NY ZIP +4 10007
b At any time during the calendar year, did the organization have an interest in or a signature or other authority over a financial account in a foreign country (such as a bank account, securities account, or other financial account)? 91b X
If "Yes," enter the name of the foreign country
See the instructions for exceptions and filing requirements for Form TD F 90-22.1, Report of Foreign Bank and Financial Accounts
c At any time during the calendar year, did the organization maintain an office outside of the United States? 91c X
If "Yes," enter the name of the foreign country
92 Section 4947(a)(1) nonexempt charitable trusts filing Form 990 in lieu of Form 1041 - Check here and enter the amount of tax-exempt interest received or accrued during the tax year 92 N/A

Part VII Analysis of Income-Producing Activities (See the instructions.)

	Unrelated business income		Excluded by section 512, 513, or 514		(E) Related or exempt function income
	(A) Business code	(B) Amount	(C) Exclusion code	(D) Amount	
93 Program service revenue					
a CONFERENCES					89,854.
b EDUC. & SPEC. PROG.					459,146.
c LIST SALES	511140	44,193.			
d PUBLISHING REVENUE					330,000.
e					
f Medicare/Medicaid payments					
g Fees and contracts from government agencies					
94 Membership dues and assessments					1,386,101.
95 Interest on savings and temporary cash investments			14	25,126.	
96 Dividends and interest from securities			14	822,481.	
97 Net rental income or (loss) from real estate					
a debt-financed property					
b not debt-financed property					
98 Net rental income or (loss) from personal property					
99 Other investment income					
100 Gain or (loss) from sales of assets other than inventory			18	29,175,050.	
101 Net income or (loss) from special events			01	-214,741.	
102 Gross profit or (loss) from sales of inventory					-207,711.
103 Other revenue a					
b ROYALTIES			15	54,869.	
c INSURANCE PROCEEDS			01	335,909.	
d SETTLEMENT INCOME			01	68,839.	
e MISCELLANEOUS			01	14,067.	
104 Subtotal (add columns (B), (D), and (E))		44,193.		30,281,600.	2,057,390.
105 Total (add line 104, columns (B), (D), and (E))					32,383,183.

Note: Line 105 plus line 1d, Part I, should equal the amount on line 12, Part I

Part VIII Relationship of Activities to the Accomplishment of Exempt Purposes (See the instructions.)

Line No.	Explain how each activity for which income is reported in column (E) of Part VII contributed importantly to the accomplishment of the organization's exempt purposes (other than by providing funds for such purposes)
▼	STMT 12

Part IX Information Regarding Taxable Subsidiaries and Disregarded Entities (See the instructions.)

(A) Name, address, and EIN of corporation, partnership, or disregarded entity	(B) Percentage of ownership interest	(C) Nature of activities	(D) Total income	(E) End-of-year assets
NIA	%			
	%			
	%			
	%			

Part X Information Regarding Transfers Associated with Personal Benefit Contracts (See the instructions.)

- (a) Did the organization, during the year, receive any funds, directly or indirectly, to pay premiums on a personal benefit contract? Yes No
- (b) Did the organization, during the year, pay premiums, directly or indirectly, on a personal benefit contract? Yes No

Note: If "Yes" to (b), file Form 8870 and Form 4720 (see instructions)

Under penalties of perjury, I declare that I have examined this return, including accompanying schedules and statements, and to the best of my knowledge and belief, it is true, correct, and complete. Declaration of preparer (other than officer) is based on all information of which preparer has any knowledge.

Please Sign Here

Signature of officer: Ellis Rubinstein Date: 5/15/07
Type or print name and title: Ellis Rubinstein, Pres. & CEO

Paid Preparer's Use Only

Preparer's signature: Angela M. Moore Date: 5/10/07 Check if self-employed: Preparer's SSN or PTIN (See Gen. Inst. W):
Firm's name (or yours if self-employed), address, and ZIP + 4: ERNST & YOUNG LLP US EIN: 34-6565596
5451 LAKEVIEW PARKWAY SOUTH DRIVE Phone no: 317-280-3400
INDIANAPOLIS, IN 46268

SCHEDULE A
(Form 990 or 990-EZ)

Department of the Treasury
Internal Revenue Service

Organization Exempt Under Section 501(c)(3)

(Except Private Foundation) and Section 501(e), 501(f), 501(k), 501(n),
or 4947(a)(1) Nonexempt Charitable Trust

Supplementary Information - (See separate instructions.)

▶ **MUST be completed by the above organizations and attached to their Form 990 or 990-EZ**

OMB No 1545-0047

2005

Name of the organization

NEW YORK ACADEMY OF SCIENCES

Employer identification number

13-1773640

Part I Compensation of the Five Highest Paid Employees Other Than Officers, Directors, and Trustees
(See page 1 of the instructions. List each one. If there are none, enter "None.")

(a) Name and address of each employee paid more than \$50,000	(b) Title and average hours per week devoted to position	(c) Compensation	(d) Contributions to employee benefit plans & deferred compensation	(e) Expense account and other allowances
SEE STATEMENT 13				
Total number of other employees paid over \$50,000 . . . ▶	23			

Part II-A Compensation of the Five Highest Paid Independent Contractors for Professional Services
(See page 2 of the instructions. List each one (whether individuals or firms). If there are none, enter "None.")

(a) Name and address of each independent contractor paid more than \$50,000	(b) Type of service	(c) Compensation
SEE STATEMENT 14		
Total number of others receiving over \$50,000 for professional services ▶	16	

Part II-B Compensation of the Five Highest Paid Independent Contractors for Other Services
(List each contractor who performed services other than professional services, whether individuals or firms. If there are none, enter "None." See page 2 of the instructions.)

(a) Name and address of each independent contractor paid more than \$50,000	(b) Type of service	(c) Compensation
NONE		
Total number of other contractors receiving over \$50,000 for other services ▶	NONE	

Part III Statements About Activities (See page 2 of the instructions.)		Yes	No
1	During the year, has the organization attempted to influence national, state, or local legislation, including any attempt to influence public opinion on a legislative matter or referendum? If "Yes," enter the total expenses paid or incurred in connection with the lobbying activities ► \$ _____ (Must equal amounts on line 38, Part VI-A, or line i of Part VI-B)		X
	Organizations that made an election under section 501(h) by filing Form 5768 must complete Part VI-A Other organizations checking "Yes" must complete Part VI-B AND attach a statement giving a detailed description of the lobbying activities		
2	During the year, has the organization, either directly or indirectly, engaged in any of the following acts with any substantial contributors, trustees, directors, officers, creators, key employees, or members of their families, or with any taxable organization with which any such person is affiliated as an officer, director, trustee, majority owner, or principal beneficiary? (If the answer to any question is "Yes," attach a detailed statement explaining the transactions)		
a	Sale, exchange, or leasing of property?	2a	X
b	Lending of money or other extension of credit?	2b	X
c	Furnishing of goods, services, or facilities?	2c	X
d	Payment of compensation (or payment or reimbursement of expenses if more than \$1,000)? . FORM 990, PART V	2d	X
e	Transfer of any part of its income or assets?	2e	X
3a	Do you make grants for scholarships, fellowships, student loans, etc? (If "Yes," attach an explanation of how you determine that recipients qualify to receive payments)	3a	X
b	Do you have a section 403(b) annuity plan for your employees?	3b	X
c	During the year, did the organization receive a contribution of qualified real property interest under section 170(h)?	3c	X
4a	Did you maintain any separate account for participating donors where donors have the right to provide advice on the use or distribution of funds?	4a	X
b	Do you provide credit counseling, debt management, credit repair, or debt negotiation services?	4b	X

Part IV Reason for Non-Private Foundation Status (See pages 3 through 6 of the instructions.)

- The organization is not a private foundation because it is (Please check only **ONE** applicable box)
- 5 A church, convention of churches, or association of churches Section 170(b)(1)(A)(i)
 - 6 A school Section 170(b)(1)(A)(ii) (Also complete Part V)
 - 7 A hospital or a cooperative hospital service organization Section 170(b)(1)(A)(iii)
 - 8 A Federal, state, or local government or governmental unit Section 170(b)(1)(A)(v)
 - 9 A medical research organization operated in conjunction with a hospital Section 170(b)(1)(A)(iii) Enter the hospital's name, city, and state ► _____
 - 10 An organization operated for the benefit of a college or university owned or operated by a governmental unit Section 170(b)(1)(A)(iv) (Also complete the **Support Schedule** in Part IV-A)
 - 11a An organization that normally receives a substantial part of its support from a governmental unit or from the general public Section 170(b)(1)(A)(vi) (Also complete the **Support Schedule** in Part IV-A)
 - 11b A community trust Section 170(b)(1)(A)(vi) (Also complete the **Support Schedule** in Part IV-A)
 - 12 An organization that normally receives (1) more than 33 1/3% of its support from contributions, membership fees, and gross receipts from activities related to its charitable, etc , functions - subject to certain exceptions, and (2) no more than 33 1/3% of its support from gross investment income and unrelated business taxable income (less section 511 tax) from businesses acquired by the organization after June 30, 1975 See section 509(a)(2) (Also complete the **Support Schedule** in Part IV-A)
 - 13 An organization that is not controlled by any disqualified persons (other than foundation managers) and supports organizations described in (1) lines 5 through 12 above, or (2) section 501(c)(4), (5), or (6), if they meet the test of section 509(a)(2) Check the box that describes the type of supporting organization ► Type 1 Type 2 Type 3

Provide the following information about the supported organizations (See page 6 of the instructions)

(a) Name(s) of supported organization(s)	(b) Line number from above

- 14 An organization organized and operated to test for public safety Section 509(a)(4) (See page 6 of the instructions)

Part IV-A Support Schedule (Complete only if you checked a box on line 10, 11, or 12) Use cash method of accounting.

Note You may use the worksheet in the instructions for converting from the accrual to the cash method of accounting

Table with 6 columns: Calendar year (or fiscal year beginning in), (a) 2004, (b) 2003, (c) 2002, (d) 2001, (e) Total. Rows include: 15 Gifts, grants, and contributions received; 16 Membership fees received; 17 Gross receipts from admissions, merchandise sold or services performed; 18 Gross income from interest, dividends, amounts received from payments on securities loans; 19 Net income from unrelated business activities; 20 Tax revenues levied for the organization's benefit; 21 The value of services or facilities furnished to the organization by a governmental unit; 22 Other income; 23 Total of lines 15 through 22; 24 Line 23 minus line 17; 25 Enter 1% of line 23.

26 Organizations described on lines 10 or 11: a Enter 2% of amount in column (e), line 24 NOT APPLICABLE; b Prepare a list for your records to show the name of and amount contributed by each person; c Total support for section 509(a)(1) test; d Add Amounts from column (e) for lines 18, 19, 22; e Public support (line 26c minus line 26d total); f Public support percentage (line 26e (numerator) divided by line 26c (denominator)).

27 Organizations described on line 12: a For amounts included in lines 15, 16, and 17 that were received from a "disqualified person," prepare a list for your records to show the name of, and total amounts received in each year from, each "disqualified person" Do not file this list with your return. Enter the sum of such amounts for each year

(2004) NONE (2003) NONE (2002) NONE (2001) NONE

b For any amount included in line 17 that was received from each person (other than "disqualified persons"), prepare a list for your records to show the name of, and amount received for each year, that was more than the larger of (1) the amount on line 25 for the year or (2) \$5,000 (Include in the list organizations described in lines 5 through 11, as well as individuals) Do not file this list with your return. After computing the difference between the amount received and the larger amount described in (1) or (2), enter the sum of these differences (the excess amounts) for each year

(2004) NONE (2003) NONE (2002) NONE (2001) NONE

c Add Amounts from column (e) for lines 15, 16, 17, 20, 21; d Add Line 27a total NONE and line 27b total NONE; e Public support (line 27c total minus line 27d total); f Total support for section 509(a)(2) test; g Public support percentage (line 27e (numerator) divided by line 27f (denominator)); h Investment income percentage (line 18, column (e) (numerator) divided by line 27f (denominator)).

28 Unusual Grants: For an organization described in line 10, 11, or 12 that received any unusual grants during 2001 through 2004, prepare a list for your records to show, for each year, the name of the contributor, the date and amount of the grant, and a brief description of the nature of the grant Do not file this list with your return. Do not include these grants in line 15

Part V Private School Questionnaire (See page 7 of the instructions.) NOT APPLICABLE
 (To be completed ONLY by schools that checked the box on line 6 in Part IV)

	Yes	No
29 Does the organization have a racially nondiscriminatory policy toward students by statement in its charter, bylaws, other governing instrument, or in a resolution of its governing body?		
30 Does the organization include a statement of its racially nondiscriminatory policy toward students in all its brochures, catalogues, and other written communications with the public dealing with student admissions, programs, and scholarships?		
31 Has the organization publicized its racially nondiscriminatory policy through newspaper or broadcast media during the period of solicitation for students, or during the registration period if it has no solicitation program, in a way that makes the policy known to all parts of the general community it serves? If "Yes," please describe, if "No," please explain. (If you need more space, attach a separate statement)		

32 Does the organization maintain the following:		
a Records indicating the racial composition of the student body, faculty, and administrative staff?		
b Records documenting that scholarships and other financial assistance are awarded on a racially nondiscriminatory basis?		
c Copies of all catalogues, brochures, announcements, and other written communications to the public dealing with student admissions, programs, and scholarships?		
d Copies of all material used by the organization or on its behalf to solicit contributions?		
If you answered "No" to any of the above, please explain (If you need more space, attach a separate statement)		

33 Does the organization discriminate by race in any way with respect to:		
a Students' rights or privileges?		
b Admissions policies?		
c Employment of faculty or administrative staff?		
d Scholarships or other financial assistance?		
e Educational policies?		
f Use of facilities?		
g Athletic programs?		
h Other extracurricular activities?		
If you answered "Yes" to any of the above, please explain (If you need more space, attach a separate statement)		

34 a Does the organization receive any financial aid or assistance from a governmental agency?		
b Has the organization's right to such aid ever been revoked or suspended? If you answered "Yes" to either 34a or b, please explain using an attached statement		
35 Does the organization certify that it has complied with the applicable requirements of sections 4.01 through 4.05 of Rev. Proc. 75-50, 1975-2 C.B. 587, covering racial nondiscrimination? If "No," attach an explanation		

Part VI-A Lobbying Expenditures by Electing Public Charities (See page 9 of the instructions.)

(To be completed ONLY by an eligible organization that filed Form 5768) NOT APPLICABLE

Check a if the organization belongs to an affiliated group Check b if you checked "a" and "limited control" provisions apply

Limits on Lobbying Expenditures

(The term "expenditures" means amounts paid or incurred)

Table with 3 columns: Line number, Description, (a) Affiliated group totals, (b) To be completed for ALL electing organizations. Rows 36-44.

Caution: If there is an amount on either line 43 or line 44, you must file Form 4720

4-Year Averaging Period Under Section 501(h)

(Some organizations that made a section 501(h) election do not have to complete all of the five columns below)

See the instructions for lines 45 through 50 on page 11 of the instructions)

Lobbying Expenditures During 4-Year Averaging Period

Table with 6 columns: Calendar year (or fiscal year beginning in), (a) 2005, (b) 2004, (c) 2003, (d) 2002, (e) Total. Rows 45-50.

Part VI-B Lobbying Activity by Nonelecting Public Charities

NOT APPLICABLE

(For reporting only by organizations that did not complete Part VI-A) (See page 11 of the instructions.)

Table with 3 columns: Description, Yes, No, Amount. Rows for various lobbying activities (a-i).

If "Yes" to any of the above, also attach a statement giving a detailed description of the lobbying activities

FORM 990, PART I - EXCLUDED CONTRIBUTIONS
=====

DESCRIPTION

AMOUNT

GALA

466,000.

TOTAL

466,000.
=====

FORM 990, PART I - SPECIAL FUNDRAISING EVENTS AND ACTIVITIES

DESCRIPTION	GROSS REVENUE	DIRECT EXPENSES	NET INCOME
GALA	147,000.	361,741.	-214,741.
TOTALS	147,000.	361,741.	-214,741.

FORM 990, PART I - GROSS SALES LESS RETURNS AND ALLOWANCES
=====

DESCRIPTION -----	AMOUNT -----
PUBLICATION SALES	1,442,159. -----
TOTAL	1,442,159. =====

FORM 990, PART I - OTHER DECREASES IN FUND BALANCES
=====

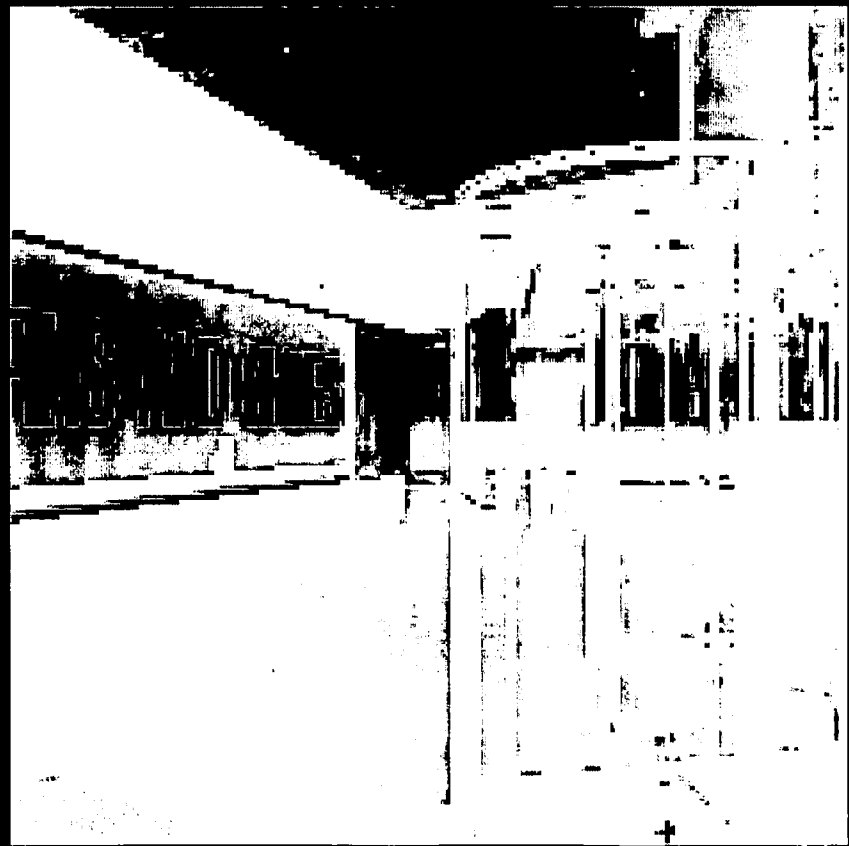
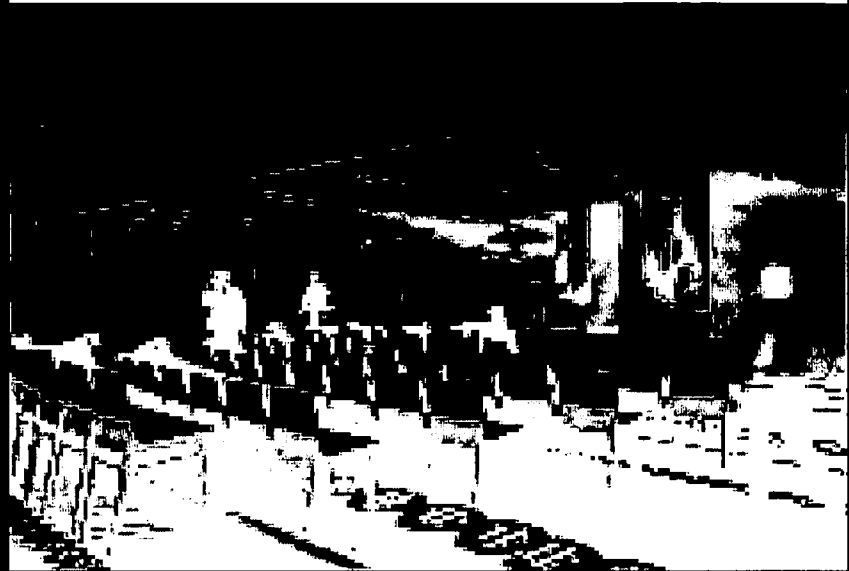
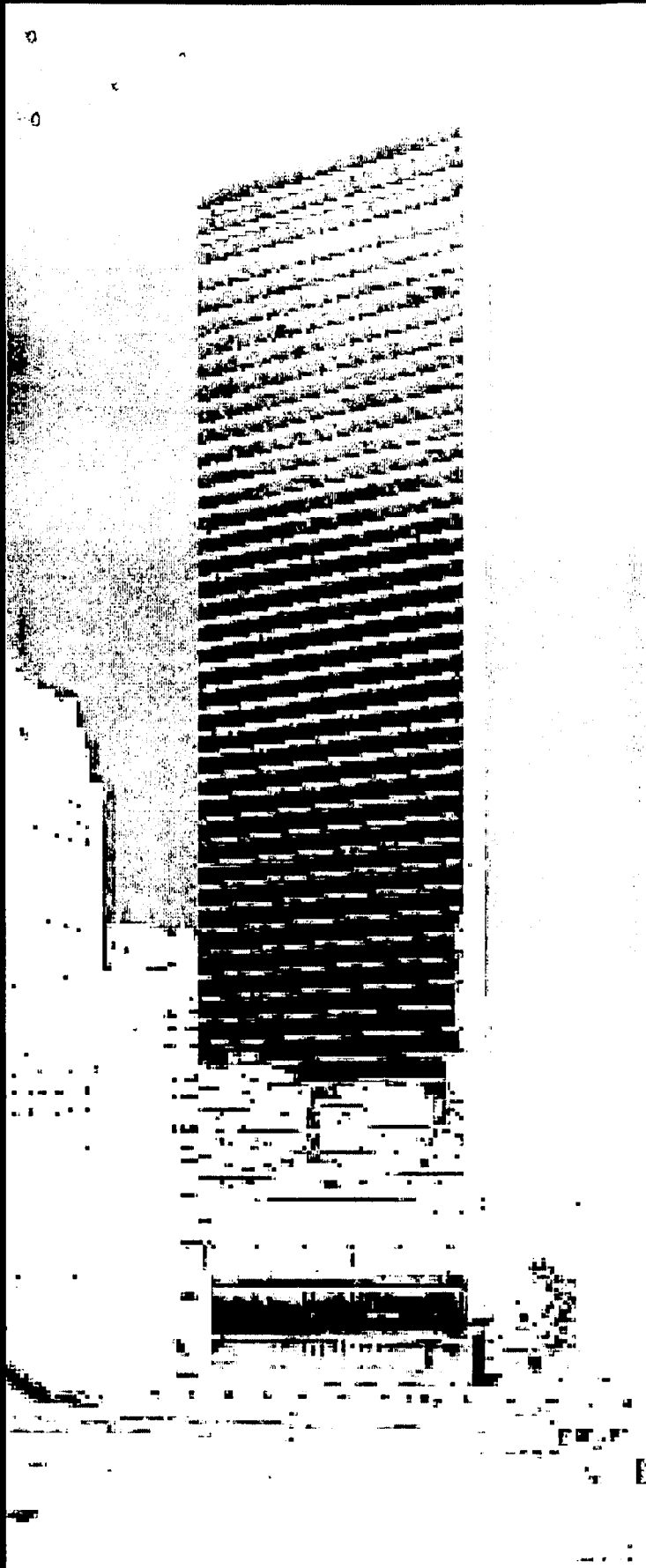
DESCRIPTION -----	AMOUNT -----
UNREALIZED LOSS ON INVESTMENTS	54,783. -----
TOTAL	54,783. =====

FORM 990, PART III - ORGANIZATION'S PRIMARY EXEMPT PURPOSE
=====

PROVIDER OF SCIENTIFIC INFORMATION - SEE ATTACHED REPORT

The
New York
Academy of
Sciences

B u i l d i n g
T o m o r r o w
T o d a y



2005 - 2006 ANNUAL REPORT





△ The Academy's first home on Barclay Street, near Broadway.

On the Cover:

Left: 7 WTC; top right: NYAS auditorium;
bottom right: lobby entrance.

▽ View of NYC from the 40th floor of 7 WTC.

A Message FROM THE PRESIDENT

Building Tomorrow's Academy In a Momentous Year

WHEN "A NUMBER OF GENTLEMEN FAVORABLE TO THE CULTIVATION of Natural Science" met in Lower Manhattan on January 29, 1817, they couldn't have imagined that the institution to which they were giving birth would thrive for two centuries, growing to a position of importance not merely in New York but throughout the international scientific community

They called it the Lyceum and wanted it to be open to anyone interested in science. But they couldn't have guessed, after it "morphed" into the New York Academy of Sciences, that it would attract tens of thousands of scientists in 140 nations. They did not limit its membership — as other academies do — to an elderly elite, but they couldn't have known that its Board of Governors and President's Council (pages 14-15) would some day be stocked with Nobel Laureates and leaders of academia, industry, government, and philanthropy.

Their branchchild has experienced all they could have hoped for, but also all the growing pains and traumas a parent would dread. There was the near-bankruptcy and resultant fire sale of one home, and the actual fire that destroyed many of the Academy's early artifacts. On the good side, there was its role as godfather to so many great institutions. New York University, the American Museum of Natural History, the American Chemical Society, and the American Physical Society. It even acted as a kind of marriage broker between the great journal *Science* and the American Association for the Advancement of Science.

It may seem hard to imagine that the events of 2005-06 would be as momentous as those I've just described. But it was. What follows is a bare-bones account of major accomplishments in a year of extraordinary renewal, the result of an enormous amount of hard work by your staff. But it could not have been accomplished without the passionate commitment of individual members and our extraordinary and growing list of institutional partners. Many are listed in the back. All are thanked most deeply.





INSPIRING PEOPLE/INNOVATIVE INITIATIVES

From the very beginning, the Academy attracted some of the city's most prominent scientists and leaders Samuel Mitchill, our founder, is a role model for young scientists today, thanks to the diversity of his career as a teacher, researcher, doctor, politician and publisher Other early members included John Torrey, sometimes called the "father of American botany," naturalist and painter John James Audubon, and such politicians as NYC Mayor DeWitt Clinton, and James Monroe, who took over the White House just three months after the Academy's founding. As the decades passed and the world of science and engineering produced such giants as Darwin, Edison, Pasteur, Einstein, and Margaret Mead, they also joined the Academy

Many of today's scientific greats are among the 25,880 members in the Academy as of June 30, 2006 — an increase of 11 percent And the more than 6,200 student members promise to be crucial in further transforming the Academy Our growing family of institutional colleagues included such new partners this year as the University of California-Berkeley, the University of Miami, Novo Nordisk, the Institute for the Study of Aging, the UN Millennium Project, and the Clinton Global Initiative, to name just a few.

What makes the Academy so attractive to so many?

One answer lies in our leadership style Historically, the Academy has been among the first with studies, publications, or meetings and conferences on timely issues, such as environmental pollution (1876), antibiotics (1946), tranquilizers (1956), women in science (1977), AIDS (1983), managed health care (1996), SARS (2003), and art and the brain (2005) among others.

Another is our cross-disciplinary and cross-sectional bridge-building activities. In 2005-06, the Academy sponsored over 125 events (up by 20 percent) in the hottest areas of science and at the interstices of science and society, such as our groundbreaking *Frontiers of Biomedical Science* conference in China and our growing number of *Frontiers of Science* Program discussion groups

The Academy's innovative initiatives and willingness to change are also important This year, for example, we inaugurated a program in the physical sciences and engineering and expanded our efforts in the conference area and in our Science Alliance for Graduate Students and Postdocs

We topped off the year by disseminating wisdom at an ever greater rate we produced more than 100 new eBriefings, the *Annals* climbed to 5th in the ranking of multi-disciplinary journal citations, and our Science & the City Webzine instituted sparkling new features

BACK HOME AGAIN

I close with our foremost accomplishment of the year The first meeting of our organization was in a hall of the three-storied College of Physicians and Surgeons (not yet a part of Columbia University) on Barclay Street Four months later, they secured permanent space on Broadway directly across from City Hall From there, they launched an institution of unique attributes that contributed to science and society in good times and bad, in more than a dozen homes reaching ever further northward to its most recent one at 2 East 63rd Street.

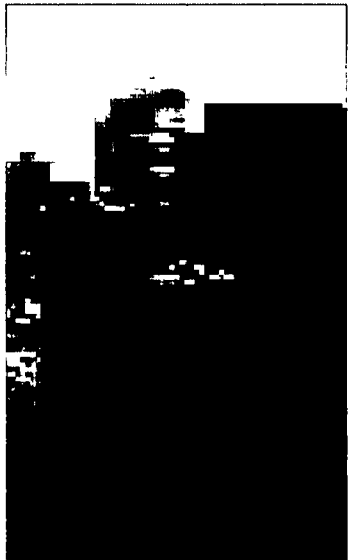
Now, in our 189th year, in perhaps the most dramatic transition in the history of the Academy, we sold our home of nearly 60 years and acquired our latest one the 40th floor of 7 World Trade Center In doing so, we not only positively transformed our finances thanks to the sale, but we also made a highly symbolic and very practical gesture Returning to the area of New York where we were born seems only fitting in light of our approaching bicentennial. And being the first tenants to have leased space in the first building to rise at the Trade Center site since September 11, 2001 reaffirms our commitment, as a New York City-based institution, to the rebirth of its historic downtown heart

It is also appropriate, with the Academy's global membership and growing global ties, that it be located at the crossroads of a reemerging world trade presence And what a wonderful new home it is, too — one of the most technologically-advanced, "green" buildings in the world, with plenty of space for our own meetings and for use by local cultural and community organizations

Seven World Trade Center provides the Academy with a home to carry it into its third century, to hold its New York-based events even as we expand globally, and to give our youth and our experienced scientists the opportunity to do what people love to do most. meet those they most want to meet, exchange thoughts, get new ideas, and feel inspired-both by the views without and the views within

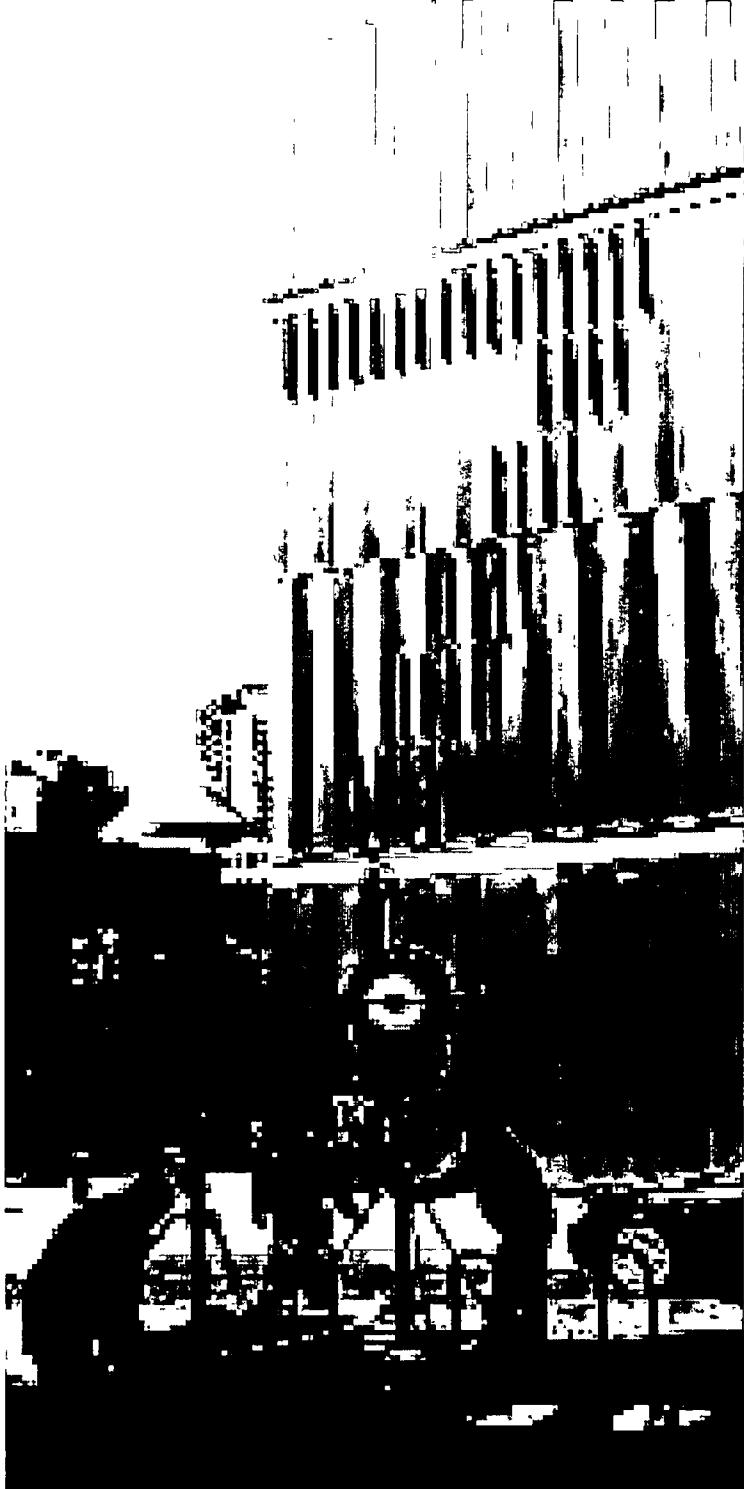
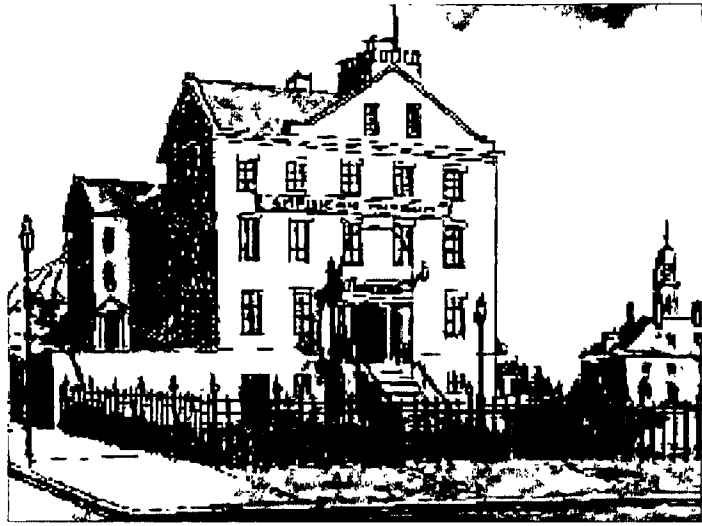


Ellis Rubinstein, President



APRIL 1817 ►

Just three months after its January 1817 birth on Barclay Street, the Academy moved (in April) to a room at The New York Institution, the city's former almshouse. On the northwest corner of Broadway and Chambers Street, the Institution was right next door to the city jail and across from City Hall. The Academy (then called the Lyceum) shared the building with several scientific and cultural organizations, including the New York Historical Society and "Scudder's Museum," a collection of curiosities such as stuffed birds, seashells, and minerals.



Building Scientific Communities

ONE OF THE ACADEMY'S MOST SUCCESSFUL EFFORTS in 2005-06 was the Frontiers of Science Program. Formally organized in 2003, the program constitutes interdisciplinary discussion groups led by prominent researchers working in some of the hottest areas of science. It recognizes that scientists benefit from intimate seminars in which leading senior investigators from multiple institutions can meet alongside graduate students, postdoctoral fellows, and other young researchers to explore ideas and exchange information at the cutting edge of emerging disciplines.

Two new discussion groups were launched during the year, Predictive Toxicology in November 2005 and Cancer and Signaling in May 2006. They joined 12 other groups, from biochemical pharmacology to systems biology (See the list of discussion groups on pages 17-18.) These groups held 60 meetings during the year, bringing together more than 3,800 attendees. Plans were underway to add two new discussion groups in 2006-07, on Diabetes and Obesity and on Vaccinology.

Among the Frontiers Program's new strategies was the inauguration of joint meetings, such as one held between the Predictive Toxicology DG and the Systems Biology DG on "Systems Toxicology," and another between the RNAi DG and the Computational Biology and Bioinformatics DG on "MicroRNAs and their Targets." The program also began holding special year-end meetings at which stellar grads and postdocs were selected to present their work. This Frontiers format — adopted by the Chemical Biology and Genome Integrity DGs, for example — provided a unique opportunity for scientists beginning careers to share the podium with more seasoned colleagues.

UNMATCHED TOPICS

Frontiers groups sponsored meetings covering a wide range of topics. Highlights included an in-depth look by the Biochemical Pharmacology DG

◀ The Academy was the first tenant to sign a lease at 7 World Trade Center, in December 2005. A shimmering, sharp-edged, 52-story parallelogram, the building is 741 feet tall, cost \$700 million to build, and has 1.7 million square feet of office space. The tower is sheathed in 538,420 square feet of glass — more than 12 acres.





at *Neurophysiological Anomalies in Schizophrenia. Potential Drug Targets or Biomarkers?* Speakers considered how a better understanding of neuronal circuitry dynamics could reveal not only the pathophysiology of schizophrenia, but also indicate potential targets for novel anti-psychotic drug therapies

A special session of the Emerging Infectious Diseases Discussion Group on *The Life Sciences, Biosecurity, and Dual-Use Research* included experts from the Universities of Exeter and Bradford in England, who led an interactive discussion on dual-use agents — biological threats that might arise from life science research — and whether some lines of investigation are perhaps too “contentious” to pursue The Imaging DG held innovative meetings on such topics as *Genes, the Brain, and Behavior Under Stress*, while a RNAi DG gathering featured a spirited discussion of the latest research aimed at delivering small interfering DNA molecules, a potential new class of therapeutics to the brain

The success of the Frontiers of Science discussion groups lies in great part in the loyalty and commitment of the program committees that guide their efforts It is, in fact, these leading members of the scientific community who volunteer their time and energy to serve on committees that are the intellectual “backbones” of the Frontiers program (See *who's on the committees on pages 17-18*)

In January 2006, an initiative focusing on physical sciences and engineering was launched, with plans to develop programming for those in the non-bio and medical sciences, including physicists, chemists, engineers, and mathematicians The first move in this initiative was establishment of a new Green Science and Environmental Systems Discussion Group, getting underway in fall '06 as part of the Academy's move to its new “green” home at 7 WTC

Creating Tomorrow's Science Leaders



WHEN THE SCIENCE ALLIANCE FOR GRADUATE STUDENTS and Postdocs was created in 2003, the program boasted the cooperation of deans of a dozen of the leading universities, teaching hospitals, and independent laboratories in the greater New York/New Jersey area Today there are a total of 30 academic entities that make up the Alliance and its international offshoot From Brooklyn

and Newark to Sweden and Australia (and others), more than 4,600 students are enrolled This past year alone, such prestigious institutions as the University of California-Berkeley, Brooklyn Polytechnic University, the University of Miami's Miller School of Medicine and its Rosenstiel School of Marine and Atmospheric Sciences, and Korea's Hallym University joined (See *the list of Alliance partners on page 16*)

Why are so many academic institutions participating in the Science Alliance? This unprecedented program provides the kind of guidance on careers, networking, and mentoring that is invaluable to young investigators More than 1,000 students attended Alliance-sponsored events in the first six months of 2006 alone, but thousands more participated through the Academy's special Alliance Web portal, which featured multimedia electronic summaries of meetings of interest, as well as jobs, career development, and science news

In 2005-06, the Alliance offered an extensive program of activities to its student members Young investigators had the opportunity to learn about such topics as how to improve their communications skills for scientific presentations; the ins-and-outs of funding and running a lab as a young investigator, a how-to on getting published in top-tier journals, and the best ways to hunt for a job in the science sector

Two special events were a seminar, *Mastering Your Visa*, for foreign nationals living and working in the U.S., and a talk by 1996 Nobel Laureate Peter Doherty on the realities of being a research scientist and how research projects are selected, funded, and organized The Science Alliance also cooperated with the National Postdoctoral Association on a professional development symposium aimed at providing postdoctoral scholars with the information they need to advance their long-term career goals SA members also participated in many of the Academy's traditional science events — where they often comprised 40 percent of the audience

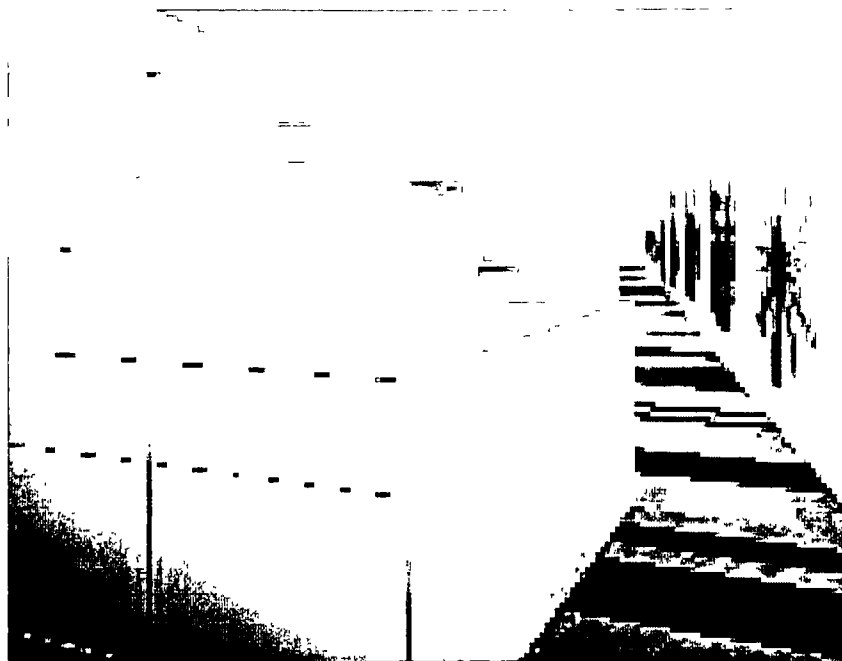


▲ Women in Science seminar.



▲ MARCH 2006

7 WTC is a model of environmental and operational efficiency in high-rise construction. According to the U.S. Green Building Council (USGBC), it is the “greenest” building in Manhattan. In March 2006 the building achieved gold status under USGBC’s Leading in Energy and Environmental Design rating system. The building has been recognized with awards from the Environmental Protection Agency, the Municipal Arts Society of New York, and the New York chapter of the American Institute of Architects.



Exploring Scientific Frontiers

THE ACADEMY HAS LONG BEEN RECOGNIZED AS ONE of the world’s most prestigious organizers of scientific conferences. Each year, international groups of speakers and participants come together under Academy auspices to exchange information on basic or applied frontier research fields, as well as on the broader roles of science, technology, and culture in society. In 2005-06, more than 9,500 attendees — 2,500 more than in the previous year — came to over 125 meetings on an encyclopedic range of topics that few other organizations could emulate — from conferences on post-traumatic stress disorder and follow-on biologics to discussions on topics like climate change or energy innovation in New York City — or even more recondite subject matter such as the quest for consciousness or the plausibility of life.

Among the major gatherings sponsored during the year, one was a truly landmark event. For the first time in its history, the Academy held a conference, *Frontiers of Biomedical Science*, in China, cosponsored with the Chinese Academy of Sciences and the Shanghai Institute of Biomedical Sciences. Leading scientists from the U.S., Europe, and China convened in Shanghai for discussions of four cutting-edge topics — chemical biology, genomic medicine, infectious diseases, and neuroscience — from both academic and health industry perspectives. Nearly 150 scientists attended, including some of the best and brightest young Chinese investigators, who participated in interactive workshops in each of the topic areas.

Other Academy conferences included two in areas receiving extensive media attention in recent years. One focused on advances in understanding post-traumatic stress disorder (PTSD), a condition about which there has been an explosion of interest since the terrorist attacks of 9/11 and the war in Iraq. More than 30 experts presented the latest research on the cognitive, biological, and genetic factors that affect how people with PTSD respond to stressful events. And the continuing debate over the teaching of evolution brought together teachers, scientists, community leaders, theologians, and educators for a conference on *Teaching Evolution and the Nature of Science*. Speakers included several who had



▶
Eric Kandel,
Nobel Laureate.





△ Charles Darwin presides over the entrance to the Academy's reception hall, while colorful graphics enliven the staff area.

testified in the Dover, Pennsylvania trial about teaching evolution in the local school system

The Academy also examined the latest in childhood resiliency research at a conference supported by the National Institutes of Health, at which behavioral, psychosocial, and neurobiological aspects of resilience in children were covered. Scientific issues in assessing generic protein drugs was the focus of the *Follow-on Biologics Workshop*, cosponsored with the U.S. Food and Drug Administration and the National Institute of Standards and Technology, while the Academy joined forces with the Oligonucleotide Therapeutics Society for its inaugural conference on such issues as strategies for finding and validating oligonucleotide drug targets, both at the molecular and physiological levels. Also on the agenda in 2005-06 were conferences focused on *Imaging and the Aging Brain* and *The Abdominal Aortic Aneurysm*.

ANTHROPOLOGY, PSYCHOLOGY AND MORE

Among the most active member groups at the Academy in 2005-06 were the Environmental Sciences, Anthropology, and Psychology Sections, each of which held lively discussions on subjects of both affiliate and general interest. In Environmental Sciences, for example, members heard about the potential of industrial ecology in solving environmental problems, how to enlist business and the military in winning the oil endgame, and New York's efforts in promoting renewable energy and caps on greenhouse gas emissions. The Anthropology Section covered such topics as current theories on whether biology and/or culture made us human, the archaeology of colonialism, the history of anthropology in the context of Hollywood moviemaking, and zones of "social abandonment" in Brazil.

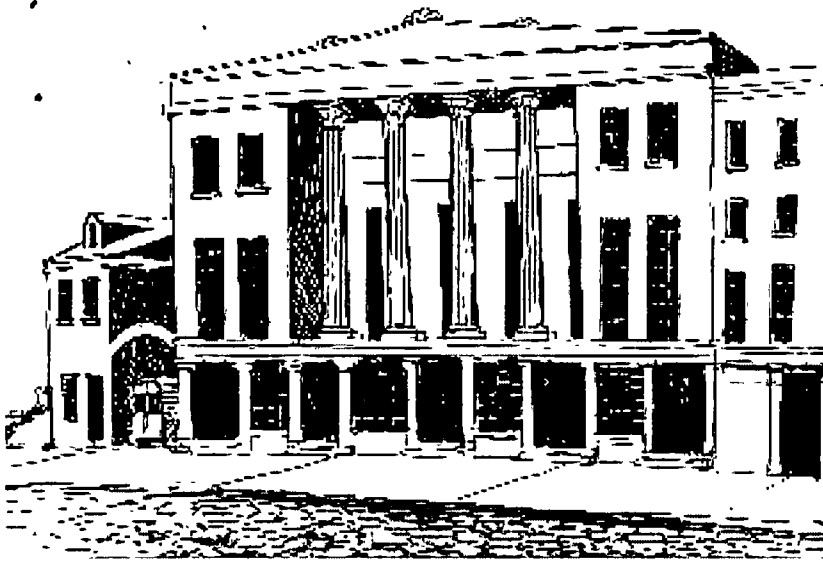
A daylong conference on *Violence and Exploitation Against Women and Girls* was one of the highlights of the year for the Psychology Section. Others featured talks on understanding the rhythmic patterns of depression, alcoholism's effects on brain and behavior, and the neuropsychology of social cognition disorders in autism. Other sections focused on such issues as the past, present and future of El Niño, atomic age biomedicine;

and molecular mechanisms of bacterial virulence.

Two other important Academy groups, the Women Investigators Network and the Network for Minority Investigators, joined forces to host a special forum on establishing a career in the private sector. The forum included panels and workshops on interviewing and networking skills, managing an effective job search, and identifying good companies for women and people of color. The Lyceum Society (the Academy group for retirees) also sponsored lunchtime talks on subjects as diverse as energy policy, the evolution of America's petrochemical industry, and the science and technology of brewing beer!

The Readers & Writers Program brought nearly a dozen top authors to discuss their science-related books during 2005-06. Highlights included visits by MIT Professor Alan Lightman on the great breakthroughs in 20th century science, science and cultural writer David Berreby on understanding the tribal mind; Stanford University Professor Leonard Susskind on string theory and the illusion of intelligent design, and Princeton University Professor Lee M. Silver on the sometimes contentious debates between science and religion and their potential impact on the future.

The highlight of the Readers and Writers series was talks by three scientists who each won the Nobel Prize in Physiology or Medicine. Eric Kandel, Nobel Laureate in 2000, gave an account of how his personal quest to understand memory intersected with the emergence of a new science of mind. In her talk, 1995 Laureate Christine Nusslein-Volhard painted a concise and illustrative overview of genetics, evolution, and cellular processes, as well as a discussion of current ethical issues in human biology. A pioneer of modern cell biology and cell fractionation techniques, the 1974 Laureate Christian de Duve, provided a guided tour of biochemistry and phylogeny, from the basic molecular building blocks to the origin of humans.



◀ APRIL 1845

The Academy's first experience in purchasing land (on Broadway near Houston Street) and constructing its own building (in 1830), ended disastrously eight years later when the organization's inability to pay its mortgage resulted in the loss of its home to an auctioneer's gavel. After a year of meeting in member homes, the NYU Medical School, housed in the former Stryker's Institute on Broadway between Bleeker and Bond Streets, offered the Academy the use of "three front rooms of the second story...free of rent, for the term of ten years." The Academy accepted the university's generous offer and moved into the building in April 1845.

Spreading Scientific Knowledge

WITH ITS FIRST PUBLICATION OF A GEOLOGICAL SURVEY for the State of New York in 1826, the Academy signaled its intention to gather and share scientific knowledge with diverse audiences in the region and beyond. But the methods utilized in modern times to disseminate information have migrated far beyond the paper and ink of the Academy's original founders. Through www.nyas.org, the Academy has taken a giant step forward in electronically delivering research findings and turning the potential of the Web into a potent force that benefits global science, better serves the needs of current members and partners, and offers a flavor of Academy programs and services to potential members and the public.

Perhaps the Academy's most significant Web innovation of recent vintage is its unique eBriefings program. Designed primarily for those unable to attend Academy events, these Web-based resources have enabled members of the worldwide science community to "listen in" on the Academy's conferences, symposia, and meetings. The eBriefings feature general event overviews (for the busy scientist) and in-depth meeting reports by seasoned professional science writers, multimedia presentations including PowerPoint slides, audio, and selected video, open questions that define future areas of research, and extensive links to related resources. In 2005-06, 100 eBriefings were added to an ever-growing and impressive library, bringing the total number to over 350. The popularity of these online summaries is attracting more and more traffic to the Academy Website. Between fiscal year 2005 and 2006, in fact, the number of unique visitors to the eBriefings page has more than doubled.

This past year's eBriefings based on Academy-sponsored meetings — many of them from the Academy's multidisciplinary Frontiers of Science Program — tackled such subjects as novel approaches to diagnosis and treatment of schizophrenia, nanotechnology for medical imaging and therapeutics, embryology and the promise of stem cells, using biomarkers to predict drug toxicity, and understanding molecular motion through computation (See www.nyas.org/prespick2 for details on these and other eBriefings.)

For easier access to particular subject areas, customized Web pages — called "channels" — assembled relevant information for each of the Academy's various groups. For example, the channel for the Emerging Infectious Diseases Discussion Group was rich with eBriefings on such topics as tuberculosis, combating drug resistance, the search for an HIV vaccine, and the Ebola and Marburg viruses. And the RNAi channel contains 14 eBriefings on this subject, the area in which one of the 2006 Nobel Prizes was awarded.

Another aspect of this Web-based initiative is the opportunity it gives the Academy to forge unique collaborations with external partner organizations who realize the potential of the eBriefings as an effective way to document and disseminate the proceedings of their own conferences. In the past year, this has resulted in eBriefings on meetings organized by the Harvard Center for Neurodegeneration and Repair, the Princeton University Department of Molecular Biology, the Earth Institute at Columbia University, the Hunter College Center for Gene Structure and Function, and the Nanobiotechnology Center at Cornell University. These alliances not only enhance the variety and breadth of Web content available to current members, but also help the Academy to reach additional potential members.

In 2005-06, eBriefings based on Academy co-sponsored events included ones on resilience in children, sponsored with the Brown University Medical School, imaging and the aging brain, with the American Federation of Aging Research, and teaching evolution in our schools, sponsored with the Wenner-Gren Foundation for Anthropological Research. One of the most comprehensive eBriefings featured coverage of the Earth Institute's *State of the Planet 2006* conference on the feasibility of sustainable development, which illuminated the nature, scale, and severity of the problems besetting the planet, the intimate interdependencies that make them so difficult to untangle and solve, and some approaches that hold promise. Because of the wide-ranging and diverse nature of the Academy's conference in China, *Frontiers of Biomedical Science*, the eBriefing for that event was particularly expansive, from highlights of panel discussions on scientific collaboration and entrepreneurship from a global perspective, to in-depth analyses of talks on chemical biology, genomic medicine, infectious diseases, and neuroscience.





www.nyas.org

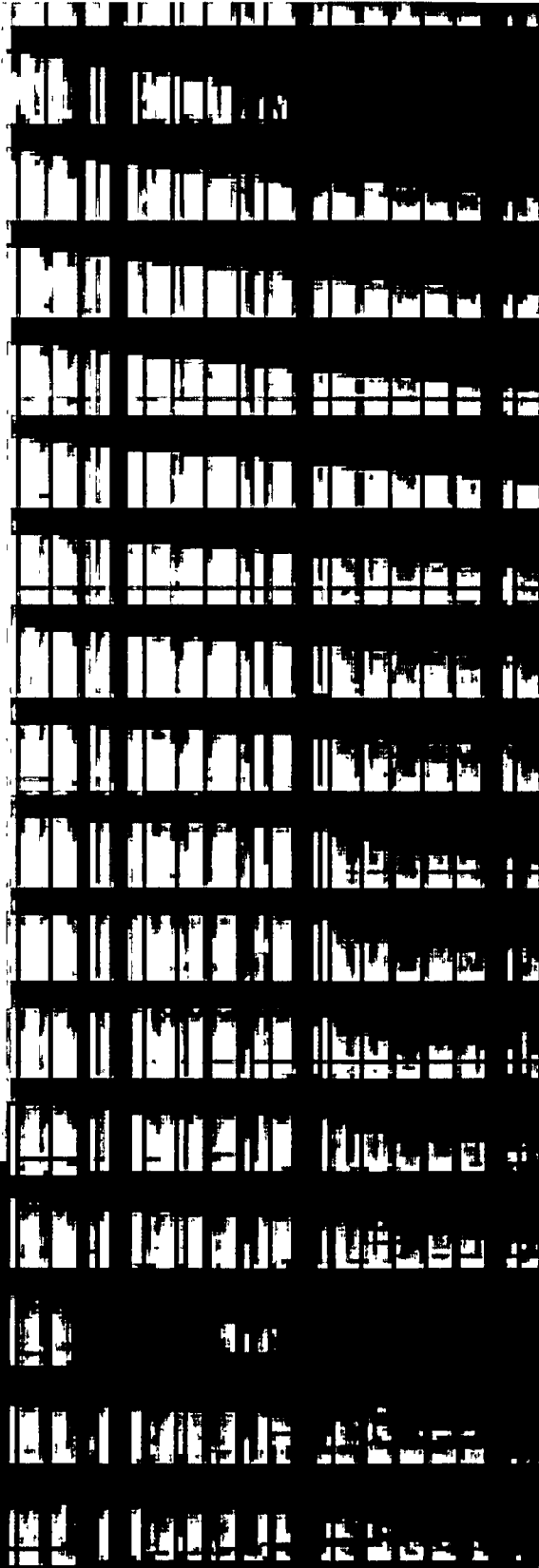
◀ Peter Lax, Courant Institute, NYU.

Science & The City

AN AREA OF THE ACADEMY WEBSITE THAT BRINGS science to the general public as well as to scientists is Science & The City (S&C). Launched in 2003, this unique site has continued to expand its content and readership, now attracting some 40,000 visitors each month from around the world. The site's signature calendar itemizes on a daily basis a vast array of science and cultural events taking place in the metropolitan area, it now boasts more than 100 "science-related things-to-do" every week. Three free email newsletters keep the public and scientists informed on current science-related activities.

In 2005-06, S&C also began producing and delivering a weekly podcast, featuring interviews, conversations, and lectures by noted scientists and science book authors. A typical podcast — an audio file made available through the Internet for listening directly on a computer or via download to an iPod or other MP3 player — is heard by more than 5,000 listeners. (See www.nyas/sn/podcasts for a complete list.) Podcasting partnerships have been established with such scientific/cultural institutions as the American Museum of Natural History, the Philoctetes Center, the Dahesh Museum, and the Science and Industry Business Library.

The Academy's multifaceted Website, which attracted more than double the number of unique monthly visitors in June 2006 as in June 2005, continued to receive awards for its excellence. One year after winning the "Webby" Award (the so-called online Oscar) for best association Website, it was one of five finalists for the 2006 "Webby." The site was also selected for a 2005 Davey Award from the International Academy of the Visual Arts and won a 2006 Summit Creative Award.



MAY 2006 ▶

What makes a building "green?" At 7 WTC, its green features include incorporation of energy conservation technologies such as steam-to-electricity turbine generators and variable speed fans; use of the latest glass technology, providing maximum building energy conservation and more natural light for tenants; water conservation measures such as rainwater reuse for building cooling; and waste reduction through diversion of more than 75 percent of construction waste and use of recycled-content materials.



▽ Facade of 7 WTC.



Publishing Scientific Research

AS ONE OF THE MOST CELEBRATED SERIES IN THE history of scholarly publishing, the *Annals of the New York Academy of Sciences* provides multidisciplinary perspectives on research of current scientific interest with far-reaching implications for the wider scientific community-and society at large. Continuously published since 1823, the *Annals* covers the proceedings of conferences sponsored by the Academy as well as those of other organizations and institutions.

Once again, in 2005-06, the Institute for Scientific Information placed the *Annals* in the top two percent of citations from approximately 6,000 scientific journals. Among multidisciplinary science journals (including such giants as *Nature* and *Science*), the *Annals* ranked fifth in impact factor among 48 journals analyzed, an improvement from the 2004 ranking of 7th, and up from 9th place in 2000.

Major news last year was the establishment of a partnership with Blackwell Publishing, the world's largest society publisher, to publish the *Annals*. While the Academy retained editorial control, acquisitions, and manuscript management, Blackwell assumed responsibility for all aspects of production and marketing. Among the reasons for the transition were Blackwell's reputation for publishing quality, its ties with professional societies and libraries, and its ability to maximize the international reach of the *Annals*.

A total of 28 *Annals* volumes were scheduled for production last year. In 2005-06, significant titles included *Tumor Progression and Therapeutic Resistance*, which addressed the breadth of translational cancer research,

◁ 7 WTC is one of the safest new buildings in the nation. Designed with increased robustness and redundancy of steel, the building also has a massive concrete central core that extends from its base to the top, placing a shield around the stairways, elevators, sprinkler pipes, and electrical conduits. Its two stairways are oversized, 20 percent wider than required by the city code, and are fitted with independent emergency lighting. The structural engineering firm for 7 WTC recently won the 2006 award for excellence from the NY Association of Consulting Engineers.

2

The NYC Science and Engineering Fair, sponsored by the Academy, is held annually at City College.



Cell Injury Mechanisms, Responses, and Therapeutics, a consideration of basic molecular healing responses and pathways of metabolic survival or death; and *Inflammatory Bowel Disease. Genetics, Barrier Function, Immunologic Mechanisms, and Microbial Pathways*

A number of *Annals* volumes revisited subjects that had also been addressed in earlier volumes in the series, including *Psychobiology of Post-Traumatic Stress Syndrome*, which presented progress in the field in the past decade; and *Living in a Chemical World. Framing the Future in Light of the Past*, the continuation of a series that signaled the dangers of asbestos and other modern hazards, especially in the workplace

The full content of volumes from the past decade were available in searchable databases on *HighWire* and *Synergy* to Academy members and subscribing libraries, with abstracts and tables of contents available to all. Scientists in the developing world gained access to *Annals* content, thanks to the Academy's participation in the Health InterNetwork Access to Research Initiative. The Academy also participated in a comparable effort to disseminate agricultural literature through AGORA (Access to Global Research in Agriculture)

Encouraging Educational Excellence

FOR OVER 65 YEARS, THE ACADEMY HAS DEVELOPED a reputation for being both a strong advocate for — and provider of — pre-collegiate science education. Through its attempt to bring real-life scientific experiences to student learning, the program's impact on students and teachers in the New York metropolitan area has been profound.

In 2005-06, Academy education activities engaged hundreds of teachers and students. Its 2006 New York City Science and Engineering Fair (NYSCEF) attracted over 1000 students from more than 55 NYC public, private, and parochial high schools. First organized by the Academy in 1948, NYSCEF provides an opportunity for young scientists to learn science through hands-on research and to demonstrate their expertise to peers, teachers, and working scientists. The 2006 NYSCEF included imaginative and sophisticated student research on such topics as the

Efficiency of Etching in the Creation of a Quantum Cascade Laser, Modern Joint Treatment Options for Autistic Children, and Statistical Applications to the Advancement of Detecting Prostate Cancer Using Proteomic Biomarkers. Over 75 scientists, engineers, medical professionals, and science educators participated as judges, including several who were Academy members.

Last year, the eight-week summer Science Research Training Program (SRTTP) gave 58 high school juniors real-world scientific experiences at 30 academic, medical, and governmental research sites. Working with more than 50 mentors, students tackled such questions as: Can pigeon waste be used to spread a dangerous fungus affecting millions of people? How can carbon dioxide be used to help curb our energy crisis? How can we protect computers from hackers and terrorism? Besides working each week at their research sites under the supervision of professional scientists, students spent time at the Academy in seminars, workshops, and career discussions. Since establishment of the SRTTP in 1979, nearly 2500 students have participated.

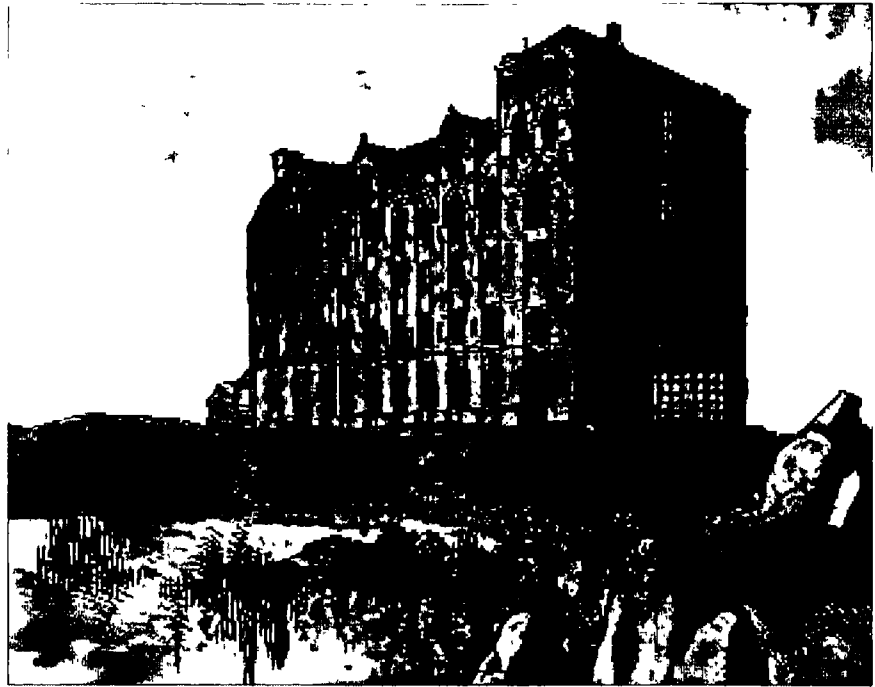
The newest tool in the Academy's education efforts is the *Laureates of Tomorrow – NOBEL Essay Contest*, administered by the Academy in partnership with the Consulate General of Sweden in New York and Nobelprize.org — the official website of the Nobel Foundation. In its second year, the Laureates program demonstrated substantial growth, with nearly three times the number of students submitting essays as in its inaugural year. Open to all high school juniors citywide, the contest requires students to submit an essay examining the impact on science and society of major achievements by Nobel Laureates in chemistry, physics, or physiology/medicine. Finalists representing 17 schools throughout NYC were chosen, with the three winners (see page 15) each receiving a free trip to Sweden and invitations to attend the Nobel Prize lectures, ceremony, and banquet.

EDUCATION ONLINE

SciEdu-Net — an Academy-maintained, web-based information portal for students and teachers — got a database upgrade in 2005-06, also added were a web resources database and an events feed from the Academy's *Science & The City* Webzine. (Visit www.sciedunet.org for a sampling of the math, science, and technology education programs listed.)

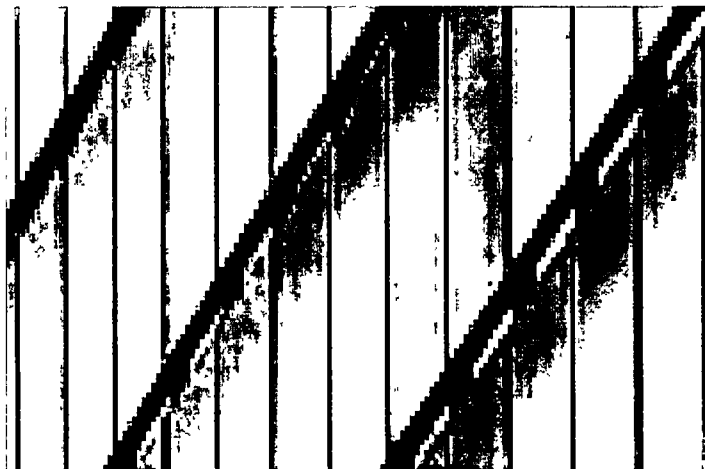
DECEMBER 1877 ►

...fifteen years after moving with the NYU Medical School to E. 24th Street, disaster struck. In May 1866, an arsonist set a fire that spread down the street to the Medical School. Everything was destroyed, including the Academy's library and artifact collections. Once again, the Academy was without a home, and for the next 10 years, meetings were held in members' homes throughout the city. It wasn't until 1877, when the American Museum of Natural History opened on Central Park West that the Academy found a permanent home, where they were to remain for the next 72 years.



▲ Human Rights (left to right): 2005 Pagels recipient Herman Winick; NYAS President Ellis Rubinstein; 2005 Pagels recipient Zafra Lerman; NYAS Chair Torsten Wiesel.

▼ Facade of 7 WTC at evening.



Influencing Science Policy

THE WORK OF THE ACADEMY'S HARBOR PROJECT exemplifies a long-standing Academy tradition of providing a forum for fostering dialogue to help find solutions to complex problems using the best science available. Since 2001, the Academy has led investigations of toxic substances in the New York/New Jersey harbor. Under the auspices of its Harbor Consortium — a diverse group of academic, business, regulatory, labor, advocacy, and environmental organizations in the NY/NJ watershed area — environmentally sound and economically and politically feasible pollution prevention strategies have been identified.

Following publication of reports on mercury and methyl mercury (in 2002), cadmium (2003), and PCBs (2004), the Harbor Project completed a report on dioxins in 2005-06. The report summarized the research on dioxins flow in the region as well as offered recommendations on curbing inputs of dioxins. For instance, the Consortium recommended measures to reduce the generation of municipal solid waste (MSW) and management improvements to avoid accidental or purposeful burning of MSW. Also suggested was further "material sciences" research to determine which building materials are less likely to burn or release dioxins. A copy of the report may be obtained from www.nyas.org/programs/harbor.asp

Besides its continued successful alliance with its Harbor Consortium partners, the Project also initiated successful collaborations in 2005-06 with four prestigious regional organizations to promote best management practices for the protection of the NY/NJ harbor estuary. Its "Friends of the Estuary" partnership included the Association of New Jersey Environmental Commissions, the Council for the Environment of New York City, Future City Inc., and the New York City Soil and Conservation District.

As part of an effort to reach out to local communities and educate the public about the science behind pollution prevention recommendations, Harbor staff visited various community boards and organizations, as well as schools and colleges in the NY/NJ harbor watershed area. Top research institutions, scientists, industry leaders, and government



agencies were also brought together to discuss an emerging issue in environmental sciences: the impact on area rivers and estuaries, including the harbor, from the use of coal tar sealants in parking lots and driveways.

Protecting Human Rights

IN THE NEARLY 30 YEARS SINCE IT WAS ESTABLISHED, the Academy's Committee on the Human Rights of Scientists has fought for hundreds of scientists, health professionals, engineers, and educators who have been detained, imprisoned, exiled, or deprived of the right to pursue science.

In 2005-06, the Committee focused its efforts on situations in Azerbaijan, Belarus, Cuba, Ethiopia, Iran, Israel, and Russia. Among its actions were a protest to the National Association of Teachers in Further and Higher Education, in the United Kingdom, on the issue of boycotting academic personnel and institutions in Israel. The committee's work on behalf of several individual scientists included the president of the Azerbaijani Academy of Sciences, who had been detained for his views on national elections, and a physician and engineer in Iran for activities on behalf of the Azeri Turk minority. A major effort was made on behalf of an Ethiopian geographer and human rights activist who had been arrested for peacefully expressing his political opinions.

Two activists who fought for the rights of scientists — especially in the Middle East — received the 2005 Heinz R. Pagels Human Rights of Scientists Award. Zafra Lerman, of Columbia College-Chicago, and Herman Winick, from Stanford University's Synchrotron Radiation Laboratory. Dr. Lerman was honored for her work as chair of a committee of the American Chemical Society, which stimulated human rights awareness among chemists throughout the world. Dr. Winick was recognized for his human rights activities under the auspices of the American Physical Society on behalf of physicists and other repressed scientists.

The Academy's first human rights award was given in 1979 to Russian physicist Andrei Sakharov. The award also has been bestowed

on such imminent scientists as Chinese dissident Fang Li-Zhi, Cuban economist Martha Beatriz Roque Cabello, and Vietnamese physician Nguyen Dan Que. A total of 27 Pagels Awards have been presented.

Promoting Science Awareness

PROMOTING UNDERSTANDING OF SCIENCE AND ITS role in society among the public has long been advanced at the Academy by a number of its traditional programs, but it has also adopted other strategies to expand the public's appreciation of science.

Utilizing science-related art to raise awareness continued in 2005-06 with six colorful exhibitions in the Academy's Gallery of Art & Science that explored such themes as environmental art, anatomical drawing and sculpture; posters from science movies, early science illustrations, and photographic portraits of contemporary scientists. In anticipation of its move to 7 World Trade Center, one exhibition featured an overview of the Academy's homes since 1817 (examples of which you will find within this Annual Report).

The member magazine, *Update*, continued to provide a window into the worlds of science with six issues detailing the Academy's own programs and activities, as well as other important topics in the sciences. These included articles on the birth of thermodynamics, genetics, race, and health, the ethics of face transplants, avian flu and the 1918 pandemic, and a report on the Katrina-caused mold problem in New Orleans. A special double issue on the Academy's move to downtown Manhattan and its new building also inspired the first major redesign of the magazine since its inception in 2001.

The Mayor's Awards for Excellence in Science and Technology are another way the Academy brings attention to scientists and their work. Sponsored in partnership with New York City's mayor, the awards honored eight outstanding scientists in 2005-06. (See page 15 for a list of all Academy honorees.)

JUNE 2006 ►

The developers of 7 World Trade Center did not ignore the arts in their building plans, gracing the building and site with works by several contemporary artists. Conceptual artist Jenny Holzer created an animated-text lobby installation of prose and poetry that scrolls across a glowing high wall in the lobby. And Jeffrey Koons installed a mirror-polished stainless steel "balloon" sculpture in the center of the park that fronts the tower. The structure's podium wall, designed by James Carpenter, includes features that emphasize the nature and play of light on the surface.





◁ OCTOBER 1949

In the mid-1940s, the Academy experienced significant growth in membership and activities. It rapidly became obvious that the administration of such a flourishing organization required more than two small rooms in the Museum of Natural History. A fund drive for purchase of a new building came up short, but Norman Woolworth, scion of the 5&10 department store family, came to the rescue and donated his Roman Renaissance mansion at 2 E. 63rd Street for the Academy's new headquarters. For only the second time in its history — the Academy had a home of its own.

Growing Members and Partners

THE TOTAL NUMBER OF ACADEMY MEMBERS CLIMBED to 25,880 in 2005-06, an increase of 11.4 percent since June 30, 2005. Of these members, 42 percent were from New York, 36 percent from other states, and 21 percent from beyond the U.S. More than 140 countries were represented in the Academy's membership roster. Student membership also continued on a positive note. The total of 6,253 student members included more than 4,600 in the Science Alliance for Graduate Students and Postdocs, and over 1,500 independent students. Nearly 1,800 research scientists from such international companies as Bristol Myers Squibb, Pfizer, Boehringer-Ingelheim, and Wyeth received membership through the Academy's Corporate Partners program.

By continuing to forge relationships with corporations, foundations, government agencies, as well as individuals, the Academy was able to reinvigorate its services to members and the scientific community through their support for conferences, discussion groups, educational programs, and other initiatives. The success of such alliances — alongside those with such entities as the Chinese Academy of Sciences, Nature, Blackwell's, and the hundreds of academic institutions that supply speakers and other participants in our activities — has con-

tributed to a groundswell of interest in partnership possibilities. Planning began in 2005-06 for upcoming Academy cosponsored conferences in Stockholm, Lyon, London, and Shanghai, and discussions got underway to hold future events with partners in places as diverse as Dublin, Barcelona, and Beijing.

Hundreds of individual partners gave time, energy, brainpower, and financial support to the Academy in 2005-06. By serving as mentors and judges to student members and on program committees for sections and discussion groups, they played an important role in day-to-day successes. And donor and advice groups like the Darwin Associates and the President's Council of business leaders, academics, and Nobel Laureates provided invaluable service to the Academy. (See lists on pages 15-18.)

SCIENCE & THE CITY GALA

The Academy's Second Annual Science & The City gala, held in November 2005, was a prime example of strategic partnership building. The gala brought together nearly 500 leaders of academic and corporate research, finance, law, culture and government to celebrate the diversity of science in New York. With a special emphasis on the importance of women and underrepresented minorities in science, the gala honored five leaders from the corporate and academic sectors. (See list of honorees on page 15.)

▷



FORM 990, PART IV - INVESTMENTS - SECURITIES
=====

DESCRIPTION -----	ENDING BOOK VALUE -----	COST OR FMV -----
REAL ESTATE MUTUAL FUND	250,000.	FMV
CORPORATE BONDS	4,370,864.	FMV
US GOVT & AGENCY BONDS	12,457,518.	FMV
MUNICIPAL BONDS	2,437,175.	FMV

TOTALS	19,515,557.	
	=====	

NEW YORK ACADEMY OF SCIENCES

13-1773640

FORM 990, PART IV - OTHER ASSETS
=====

DESCRIPTION -----	ENDING BOOK VALUE -----
ACCRUED INTEREST RECEIVABLE	293,731. -----
TOTALS	293,731. =====

FORM 990, PART IV-A - OTHER REVENUE ON BOOKS BUT NOT ON RETURN

DESCRIPTION

AMOUNT

INCOME OF THE AMERICAN
INSTITUTE OF THE CITY OF NEW
YORK

10,125.

TOTAL

10,125.

FORM 990, PART IV-A - OTHER REVENUE ON RETURN BUT NOT ON BOOKS
=====

DESCRIPTION -----	AMOUNT -----
COST OF GOODS SOLD	-1,649,870.
SPECIAL EVENT EXPENSE	-361,741.

TOTAL	-2,011,611. =====

FORM 990, PART IV-B - OTHER EXPENSES ON BOOKS BUT NOT ON RETURN

DESCRIPTION	AMOUNT
COST OF GOODS SOLD	1,649,870.
SPECIAL EVENT EXPENSE	361,741.
EXPENSES OF THE AMERICAN INSTITUTE OF THE CITY OF NEW YORK	10,125.
TOTAL	2,021,736.

FORM 990, PART V-A - CURRENT OFFICERS, DIRECTORS, AND TRUSTEES

NAME AND ADDRESS	TITLE AND TIME DEVOTED TO POSITION	COMPENSATION	CONTRIBUTIONS TO EMPLOYEE BENEFIT PLANS	EXPENSE ACCT AND OTHER ALLOWANCES
ELLIS RUBINSTEIN 7 WTC, 250 GREENWICH STREET 40TH FLOOR NEW YORK, NY 10007	CEO/PRESIDENT 35	253,000.	68,310.	NONE
THOMAS J. KELLY 7 WTC, 250 GREENWICH STREET 40TH FLOOR NEW YORK, NY 10007	CFO/VP 35	182,720.	49,334.	NONE

SEE THE FOLLOWING PAGE

BOARD OF GOVERNORS

GRAND TOTALS	435,720.	117,644.	NONE
--------------	----------	----------	------

NEW YORK ACADEMY OF SCIENCES
BOARD OF GOVERNORS

Chair

Peter B. Corr, Senior Vice President, Science & Technology, Pfizer Inc (Retired)

Vice-Chair

John E. Sexton, President, New York University

Treasurer

Michael Schmertzler, Managing Director, Aries Advisors, LLC, CSFB Private Equity, Inc.

President [ex officio]

Ellis Rubinstein

Governors

Karen E. Burke, Dermatologist and Research Scientist
Virginia W. Cornish, Assistant Professor of Chemistry, Columbia University
Brian Ferguson, Professor of Anthropology, Rutgers University
Maria C. Freire, CEO, Global Alliance for TB Drug Development
Jay Furman, Principal, RD Management LLC
Brian Greene, Professor of physics and mathematics at Columbia University, co-director of Columbia's Institute for Strings, Cosmology, and Astroparticle
William A. Haseltine, President, The Haseltine Foundation for Medical Sciences and the Arts; Chairman, Haseltine Global Health, LLC
Steve Hochberg, Managing Partner, Ascent Biomedical Ventures
Morton Hyman, Founder and Principal, MPH Enterprises, LLC
Maren Imhoff, VP for Development, The Rockefeller University
Madeleine Jacobs, Executive Director and CEO, American Chemical Society
Abraham Lackman, President, Commission on Independent Colleges and Universities
Bruce McEwen, Alfred E. Mirsky Professor of Neuroendocrinology, Rockefeller University
John F. Niblack, former President, Pfizer Global Research and Development
Eric A. Rose, Morris and Rose Milstein, Johnson and Johnson Professor and Chair, Department of Surgery, Columbia University College of Physicians and Surgeons
Jeffrey D. Sachs, The Earth Institute, Special Advisor to the United Nations Secretary General
Frank Wilczek, Nobel Laureate & Herman Feshbach Professor of Physics, MIT
Deborah Wiley, Senior VP, Corporate Communications, John Wiley and Sons, Inc.
Honorary Life Governors
William T. Golden, Chair Emeritus, American Museum of Natural History
Joshua Lederberg, Nobel Laureate & Beverly Raymond & Beverly Sackler Foundation Scholar, University Professor, and former President, Rockefeller University
Torsten N. Wiesel, Nobel Laureate & Secretary General, Human Frontier Science Program Organization, President Emeritus, Rockefeller University
Secretary [ex officio]
Larry Smith

: Physics (ISCAP) and autho

ind Surgeon:

University

FORM 990, PART VIII - ACCOMPLISHMENT OF EXEMPT PURPOSES

LINE NO.	EXPLANATION OF HOW EACH ACTIVITY FOR WHICH INCOME IS REPORTED IN COLUMN (E) OF PART VII CONTRIBUTED IMPORTANTLY TO THE ACCOMPLISHMENT OF EXEMPT PURPOSES
93A	SCIENTIFIC CONFERENCES HELD AROUND THE WORLD AND OPEN TO THE PUBLIC.
93B	EDUCATION & SPECIAL PROGRAMS BRING TOGETHER MEMBERS, STUDENTS, TEACHERS & PROFESSIONAL SCIENTISTS.
94	DUES RECEIVED IN EXCHANGE FOR MEMBERSHIP BENEFITS.
102 &93D	PUBLICATIONS FOR EDUCATING THE GENERAL PUBLIC ABOUT SCIENCE AND FOR PROFESSIONAL SCIENTISTS.

SCHEDULE A, PART I - COMPENSATION OF THE FIVE HIGHEST PAID EMPLOYEES

NAME AND ADDRESS	TITLE AND TIME DEVOTED TO POSITION	COMPENSATION	CONTRIBUTIONS TO EMPLOYEE BENEFIT PLANS	EXPENSE ACCOUNT
THOMPSON, LIANA 7 WTC, 250 GREENWICH STREET NEW YORK, NY 10007	VP, MKTG & MEMBERSHIP 35	166,579.	44,976.	NONE
BASTON, RENE 7 WTC, 250 GREENWICH STREET NEW YORK, NY 10007	VP, BUSINESS DEV 35	141,136.	38,107.	NONE
SHAIKH, RASHID 7 WTC, 250 GREENWICH STREET NEW YORK, NY 10007	DIRECTOR, PROGRAMS 35	129,141.	34,868.	NONE
PAUL, JEREMY 7 WTC, 250 GREENWICH STREET NEW YORK, NY 10007	DIR, FRONT. OF SCI. 35	121,863.	32,903.	NONE
BURKE, ADRIENNE 7 WTC, 250 GREENWICH STREET NEW YORK, NY 10007	EDITOR, SCI & CITY 35	121,695.	32,858.	NONE
TOTAL COMPENSATION		680,414.	183,712.	NONE

SCH. A, PART II-A COMPENSATION OF THE 5 HIGHEST PAID FOR PROF. SERV.
=====

<u>NAME AND ADDRESS</u>	<u>TYPE OF SERVICE</u>	<u>COMPENSATION</u>
STRUCTURETONE INC. 770 BROADWAY NEW YORK, NY 10003	CONSTRUCTION	1,275,672.
H3 HARDY COLLABORATION 902 BROADWAY NEW YORK, NY 10010	ARCHITECTS	551,903.
PORT CITY PRESS, INC. P.O. BOX 751898 CHARLOTTE, NC 28275	PRINTING	232,225.
ENFORME INTERACTIVE 241E.4TH STREET FREDERICK, MD 21701	WEB CONSULTANTS	225,425.
COMMUNITY COUNSELLING SERVICE LLC P.O. BOX 27462 NEW YORK, NY 10087	FUNDRAISING	145,835.
	TOTAL COMPENSATION	<u>2,431,060.</u>

SCHEDULE A, PART IV-A - OTHER INCOME

DESCRIPTION	2004	2003	2002	2001	TOTAL
ROYALTIES	16,864.	41,000.	39,287.	47,530.	144,681.
MISCELLANEOUS	314,060.	165,000.	NONE	NONE	479,060.
TOTALS	330,924.	206,000.	39,287.	47,530.	623,741.

NEW YORK ACADEMY OF SCIENCES
YEAR ENDED JUNE 30, 2006

FORM 990 - LAND, BUILDINGS, AND EQUIPMENT

<u>DESCRIPTION</u>	<u>AMOUNT</u>
LEASEHOLD IMPROVEMENTS	2,636,031
FURNITURE, FIXTURES AND EQUIPMENT	245,250
COMPUTER EQUIPMENT & SOFTWARE	4,811,705
GROSS LAND, BUILDINGS, & EQUIPMENT	<u>7,692,986</u>
LESS: ACCUMULATED DEPRECIATION	<u>(3,985,292)</u>
TOTAL TO LINE 57	<u><u>3,707,694</u></u>

CURRENT-YEAR DEPRECIATION EXPENSE OF \$177,650 WAS CALCULATED USING THE STRAIGHT-LINE METHOD OF DEPRECIATION OVER THE ESTIMATED USEFUL LIVES OF THE ASSETS.

- If you are filing for an **Additional (not automatic) 3-Month Extension**, complete only Part II and check this box, **X**
- Note: Only complete Part II if you have already been granted an automatic 3-month extension on a previously filed Form 8868.
- If you are filing for an **Automatic 3-Month Extension**, complete only Part I (on page 1).

Part II Additional (not automatic) 3-Month Extension of Time - Must File Original and One Copy.

Type or print File by the extended due date for filing the return. See instructions.	Name of Exempt Organization NEW YORK ACADEMY OF SCIENCES	Employer identification number 13-1773640
	Number, street, and room or suite no. If a P.O. box, see instructions 2 EAST 63RD STREET	For IRS use only
	City, town or post office, state, and ZIP code. For a foreign address, see instructions NEW YORK, NY 10021-7289	

Check type of return to be filed (File a separate application for each return):

- | | | |
|--|---|------------------------------------|
| <input checked="" type="checkbox"/> Form 990 | <input type="checkbox"/> Form 990-T(sec 401(a) or 408(a) trust) | <input type="checkbox"/> Form 5227 |
| <input type="checkbox"/> Form 990-BL | <input type="checkbox"/> Form 990-T (trust other than above) | <input type="checkbox"/> Form 6069 |
| <input type="checkbox"/> Form 990-EZ | <input type="checkbox"/> Form 1041-A | <input type="checkbox"/> Form 8870 |
| <input type="checkbox"/> Form 990-PF | <input type="checkbox"/> Form 4720 | |

STOP: Do not complete Part II if you were not already granted an automatic 3-month extension on a previously filed Form 8868.

- The books are in the care of THE ORGANIZATION
Telephone No. 212-298-8607 FAX No. 212-298-3617
- If the organization does not have an office or place of business in the United States, check this box,
- If this is for a **Group Return**, enter the organization's four digit Group Exemption Number (GEN) . If this is for the **whole group**, check this box . If it is for **part of the group**, check this box and attach a list with the names and EINs of all members the extension is for.

- I request an additional 3-month extension of time until MAY 15, 2007
- For calendar year 2006, or other tax year beginning JULY 1, 2005 and ending JUNE 30, 2006
- If this tax year is for less than 12 months, check reason: Initial return Final return Change in accounting period
- State in detail why you need the extension ALL THE INFORMATION NECESSARY TO FILE A COMPLETE AND ACCURATE RETURN IS NOT YET AVAILABLE.

- If this application is for Form 990-BL, 990-PF, 990-T, 4720, or 6069, enter the tentative tax, less any nonrefundable credits. See instructions \$
- If this application is for Form 990-PF, 990-T, 4720, or 6069, enter any refundable credits and estimated tax payments made. Include any prior year overpayment allowed as a credit and any amount paid previously with Form 8868 \$
- Balance Due.** Subtract line 8b from line 8a. Include your payment with this form, or, if required, deposit with FTD coupon or, if required, by using EFTPS (Electronic Federal Tax Payment System) See instructions \$

Signature and Verification

Under penalties of perjury, I declare that I have examined this form, including accompanying schedules and statements, and to the best of my knowledge and belief, it is true, correct, and complete, and that I am authorized to prepare this form

Signature Laura Kielczewski Title CPA Date 1/25/2007

Notice to Applicant - To Be Completed by the IRS

- We have approved this application. Please attach this form to the organization's return.
- We have not approved this application. However, we have granted a 10-day grace period from the later of the date shown below or the due date of the organization's return (including any prior extensions). This grace period is considered to be a valid extension of time for elections otherwise required to be made on a timely return. Please attach this form to the organization's return.
- We have not approved this application. After considering the reasons stated in item 7, we cannot grant your request for an extension of time to file. We are not granting a 10-day grace period.
- We cannot consider this application because it was filed after the extended due date of the return for which an extension was requested.
- Other _____

Director _____ By: _____ Date _____

Alternate Mailing Address - Enter the address if you want the copy of this application for an additional 3-month extension returned to an address different than the one entered above.

Type or print	Name ERNST & YOUNG LLP ATTN: LAURA KIELCZEWSKI
	Number and street (include suite, room, or apt. no.) or a P.O. box number 5 TIMES SQUARE, 13TH FLOOR
	City or town, province or state, and country (including postal or ZIP code) NEW YORK, NY 10036

Application for Extension of Time To File an Exempt Organization Return

OMB No 1545-1709

▶ File a separate application for each return

- If you are filing for an **Automatic 3-Month Extension**, complete only **Part I** and check this box
- If you are filing for an **Additional (not automatic) 3-Month Extension**, complete only **Part II** (on page 2 of this form).

Do not complete Part II unless you have already been granted an automatic 3-month extension on a previously filed Form 8868.

Part I Automatic 3-Month Extension of Time - Only submit original (no copies needed)

Form 990-T corporations requesting an automatic 6-month extension - check this box and complete Part I only.

All other corporations (including Form 990-C filers) must use Form 7004 to request an extension of time to file income tax returns. Partnerships, REMICs, and trusts must use Form 8736 to request an extension of time to file Form 1065, 1066, or 1041.

Electronic Filing (e-file). Form 8868 can be filed electronically if you want a 3-month automatic extension of time to file one of the returns noted below (6 months for corporate Form 990-T filers) However, you cannot file it electronically if you want the additional (not automatic) 3-month extension, instead you must submit the fully completed signed page 2 (Part II) of Form 8868. For more details on the electronic filing of this form, visit www.irs.gov/efile.

Type or print File by the due date for filing your return See instructions	Name of Exempt Organization NEW YORK ACADEMY OF SCIENCES	Employer identification number 13-1773640
	Number, street, and room or suite no. If a P.O. box, see instructions 7 WORLD TRADE CENTER	
	City, town or post office, state, and ZIP code. For a foreign address, see instructions. NEW YORK, NY 10007	

Check type of return to be filed (file a separate application for each return):

<input checked="" type="checkbox"/> Form 990	<input type="checkbox"/> Form 990-T (corporation)	<input type="checkbox"/> Form 4720
<input type="checkbox"/> Form 990-BL	<input type="checkbox"/> Form 990-T(sec 401(a) or 408(a) trust)	<input type="checkbox"/> Form 5227
<input type="checkbox"/> Form 990-EZ	<input type="checkbox"/> Form 990-T (trust other than above)	<input type="checkbox"/> Form 6069
<input type="checkbox"/> Form 990-PF	<input type="checkbox"/> Form 1041-A	<input type="checkbox"/> Form 8870

• The books are in the care of ▶ THE ORGANIZATION

Telephone No. ▶ 212-298-8607

FAX No. ▶ 212-298-3617

- If the organization does **not** have an office or place of business in the United States, check this box
- If this is for a **Group Return**, enter the organization's four digit Group Exemption Number (GEN) _____ . If this is for the **whole** group, check this box . If it is for part of the group, check this box and attach a list with the names and EINs of all members the extension will cover

1 I request an automatic 3-month (6-months for a **Form 990-T corporation**) extension of time until FEBRUARY 15, 2007, to file the exempt organization return for the organization named above. The extension is for the organization's return for:
 ▶ calendar year _____ or
 ▶ tax year beginning JULY 1, 2005, and ending JUNE 30, 2006

2 If this tax year is for less than 12 months, check reason: Initial return Final return Change in accounting period

3a If this application is for Form 990-BL, 990-PF, 990-T, 4720, or 6069, enter the tentative tax, less any nonrefundable credits. See instructions \$ _____

b If this application is for Form 990-PF or 990-T, enter any refundable credits and estimated tax payments made. Include any prior year overpayment allowed as a credit \$ _____

c Balance Due. Subtract line 3b from line 3a. Include your payment with this form, or, if required, deposit with FTD coupon or, if required, by using EFTPS (Electronic Federal Tax Payment System) See instructions \$ _____

Caution. If you are going to make an electronic fund withdrawal with this Form 8868, see Form 8453-EO and Form 8879-EO for payment instructions.

For Privacy Act and Paperwork Reduction Act Notice, see Instructions.

Form 8868 (Rev. 12-2004)